

architetto
colò fuciano
il progetto è
di esclusiva
proprietà
dell'architetto

COMUNE di PRATO
PIANO di LOTTIZZAZIONE

Il COMMITTENTE
BRINI PIERO GIOVANNI
C.F. 01890410478

UBICAZIONE:

Via Carnillo Dami
loc. San Giorgio a
Colonica

DESTINAZIONE:

RESIDENZIALE

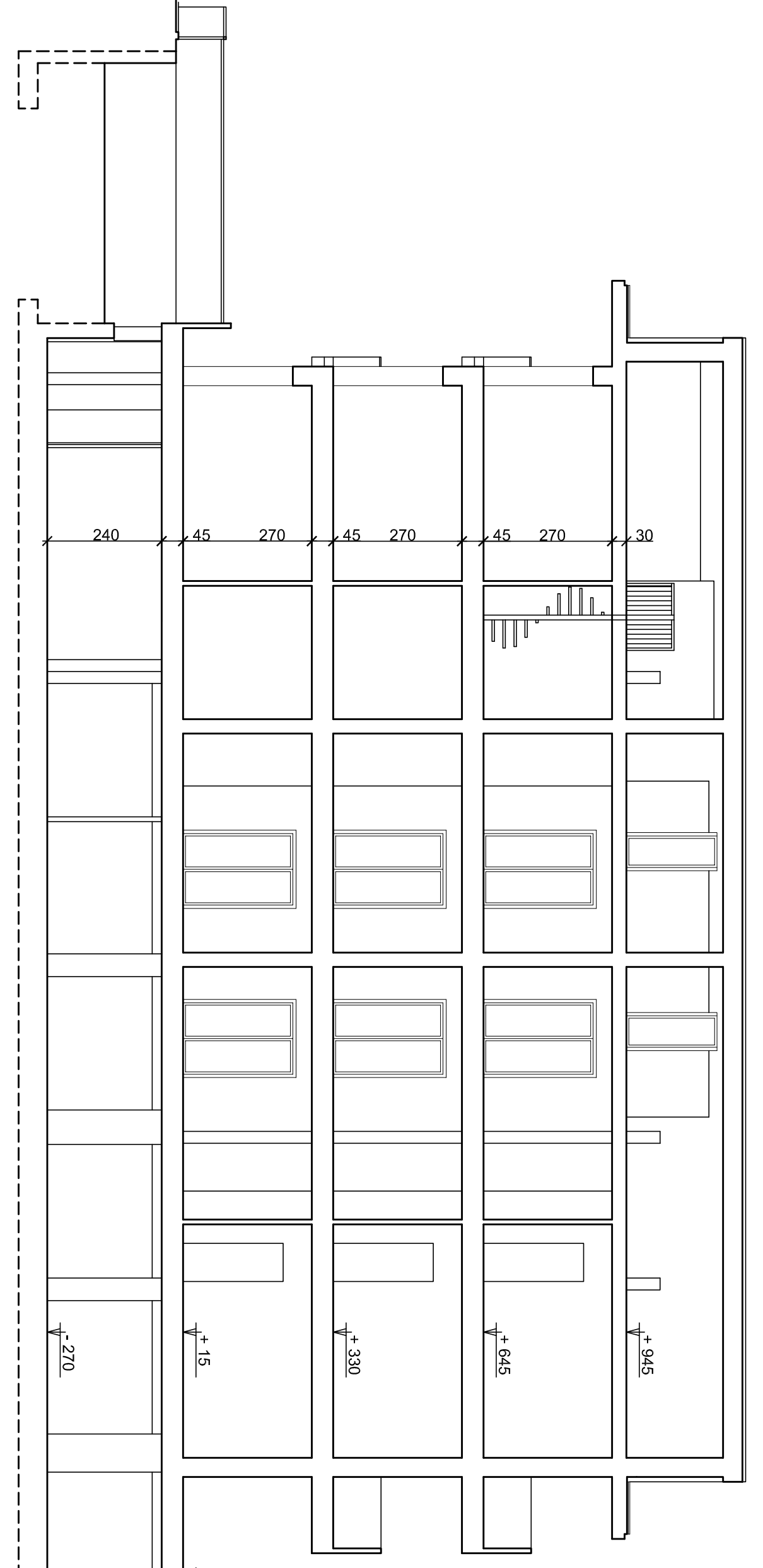
TAV. 6

PROGETTO

SEZIONI

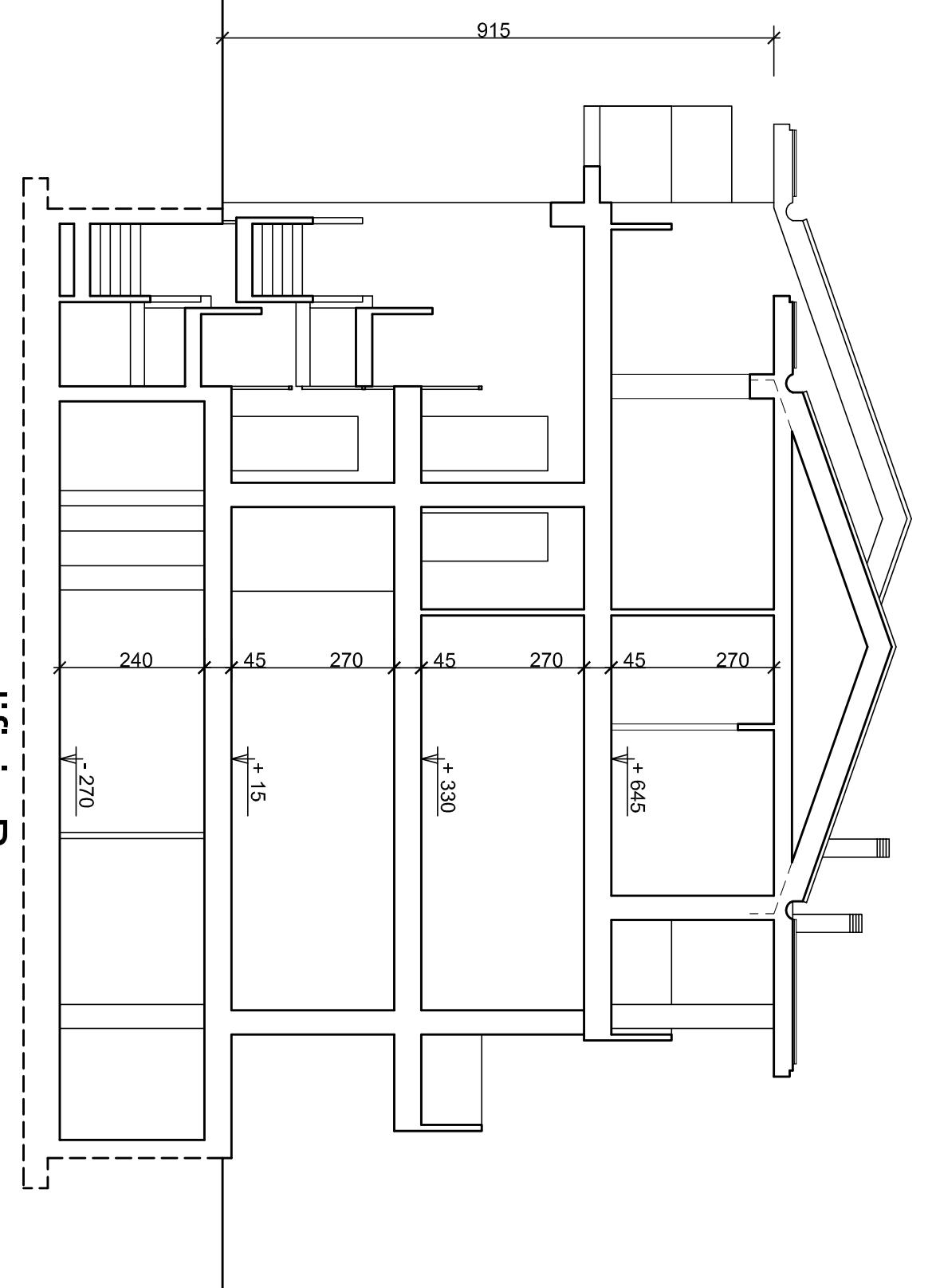
PROSPETTI

GRAFICI IN SCALA 1:100

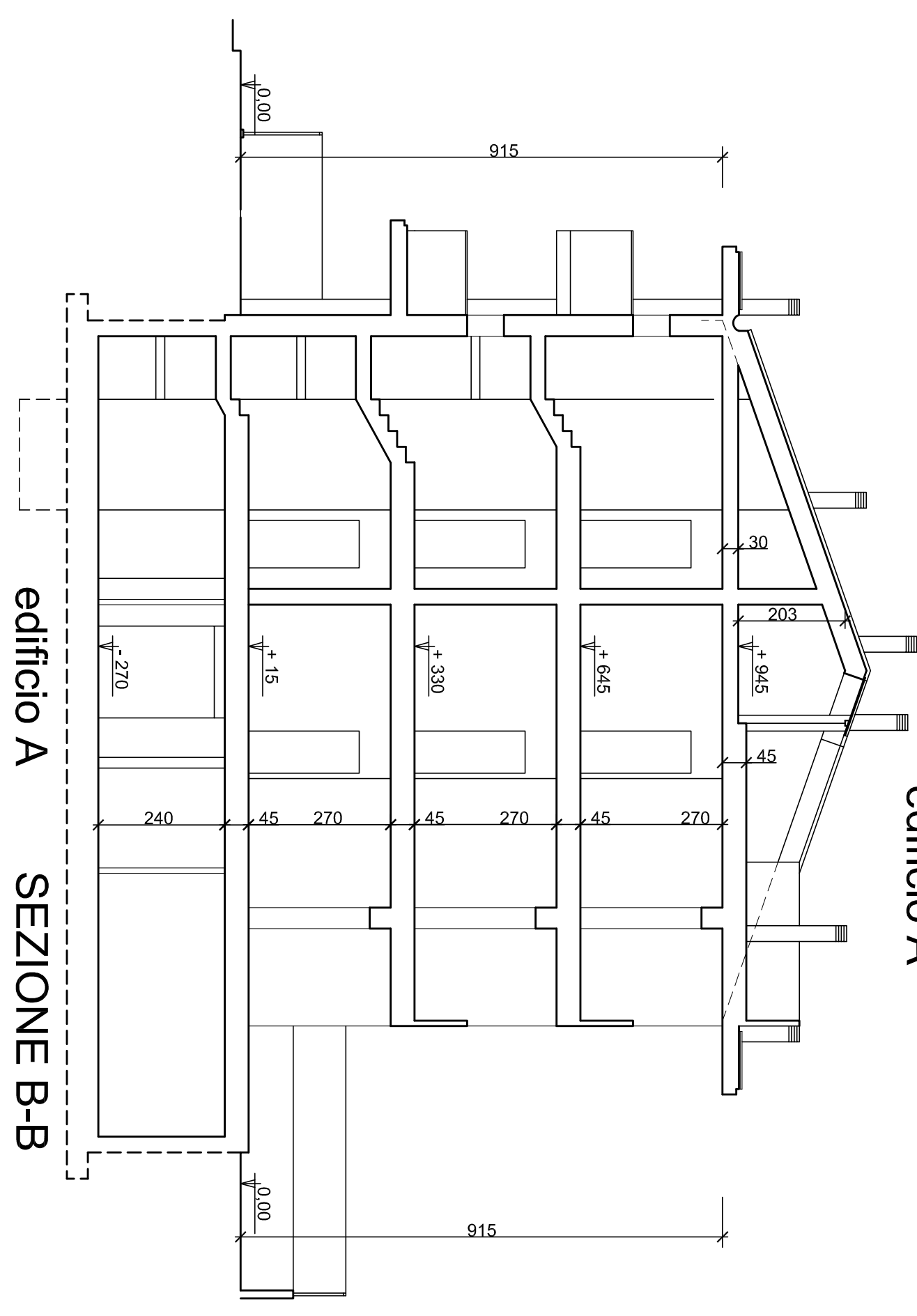


edificio A

SEZIONE A-A

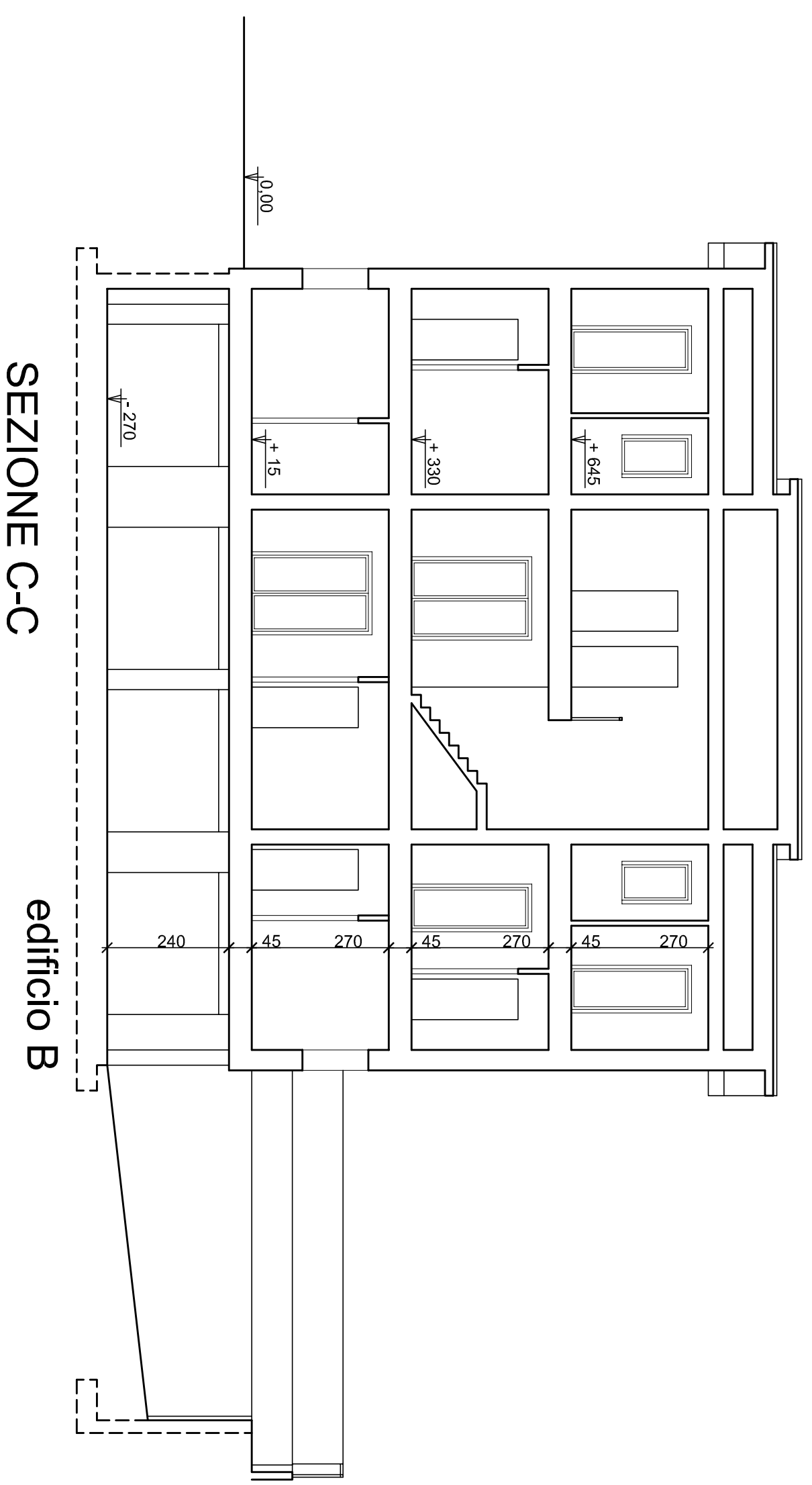


edificio B



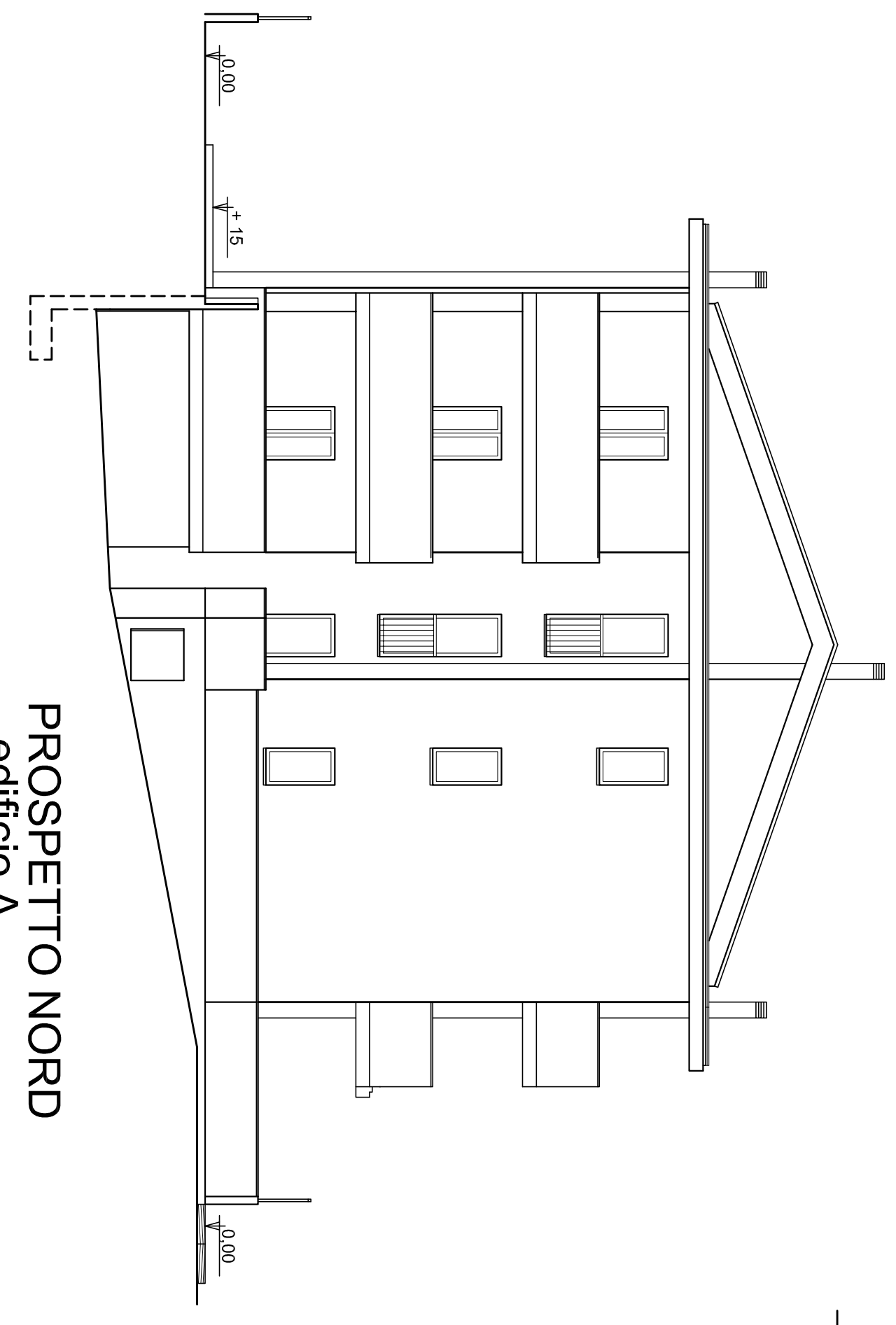
edificio A

SEZIONE B-B

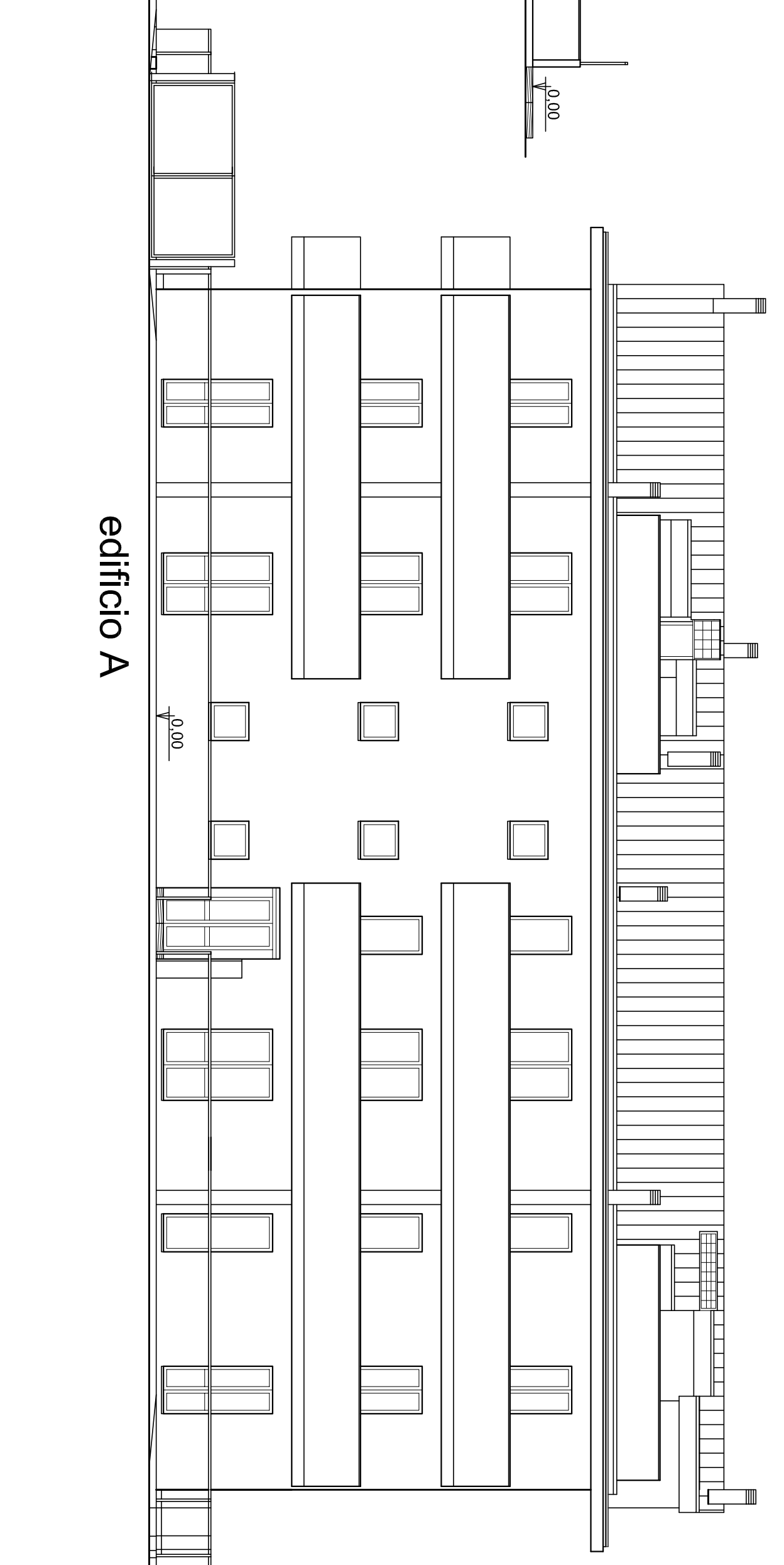


SEZIONE C-C

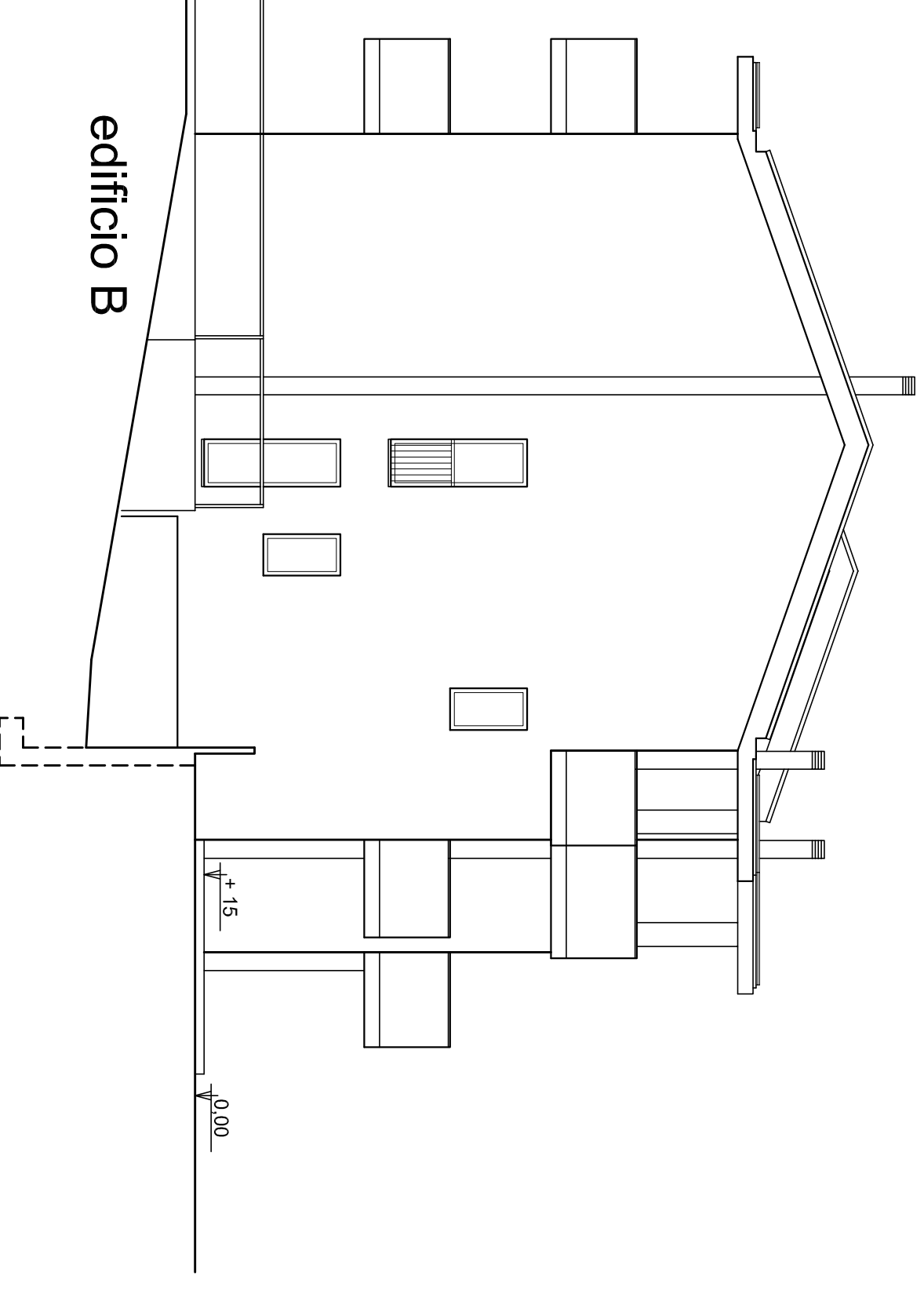
edificio B



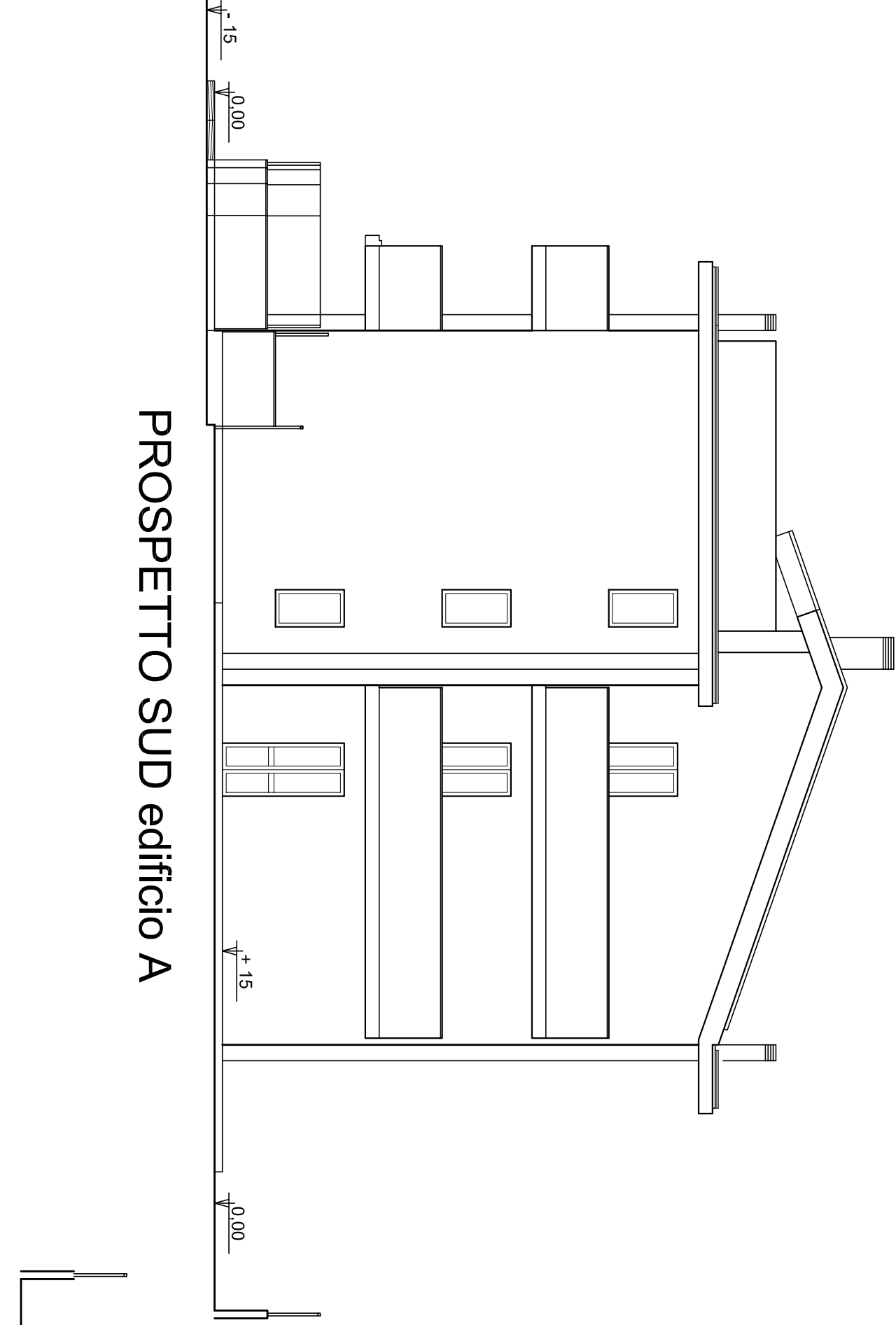
PROSPETTO NORD
edificio A



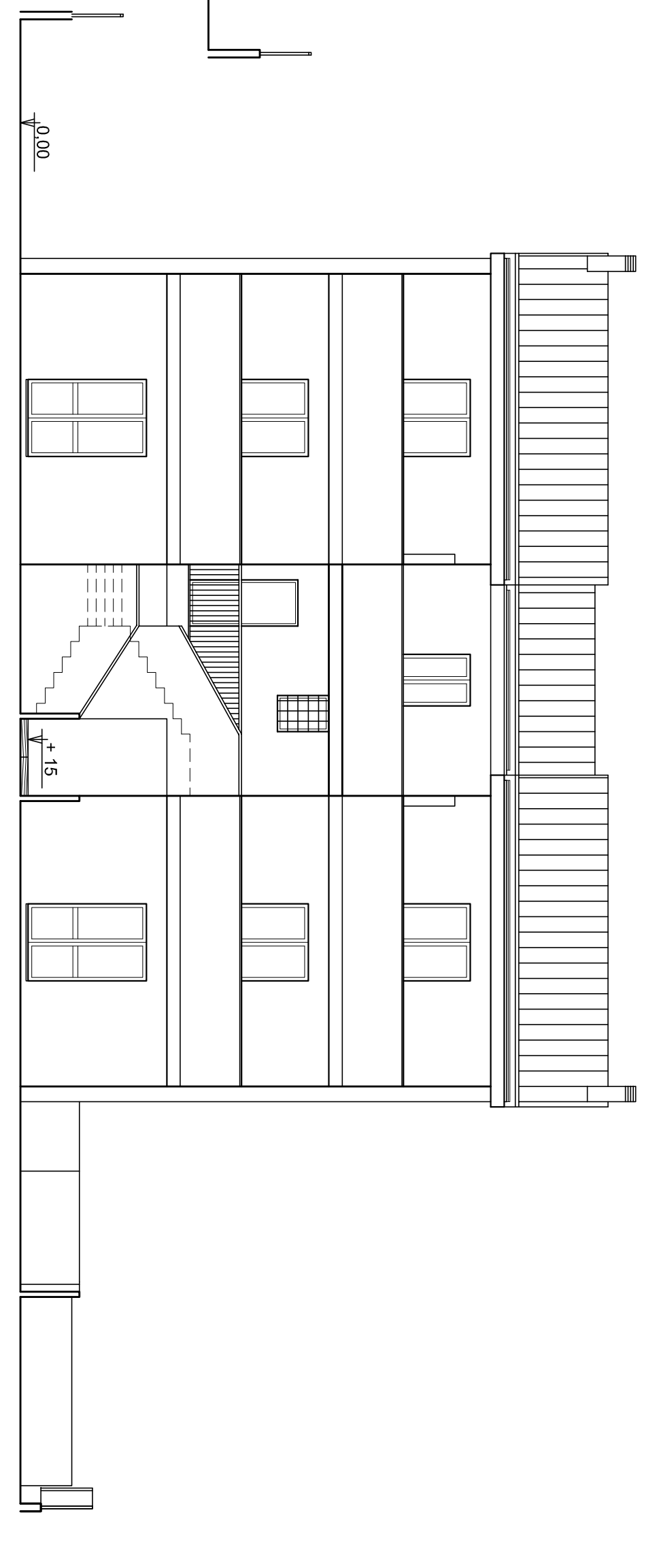
PROSPETTO OVEST



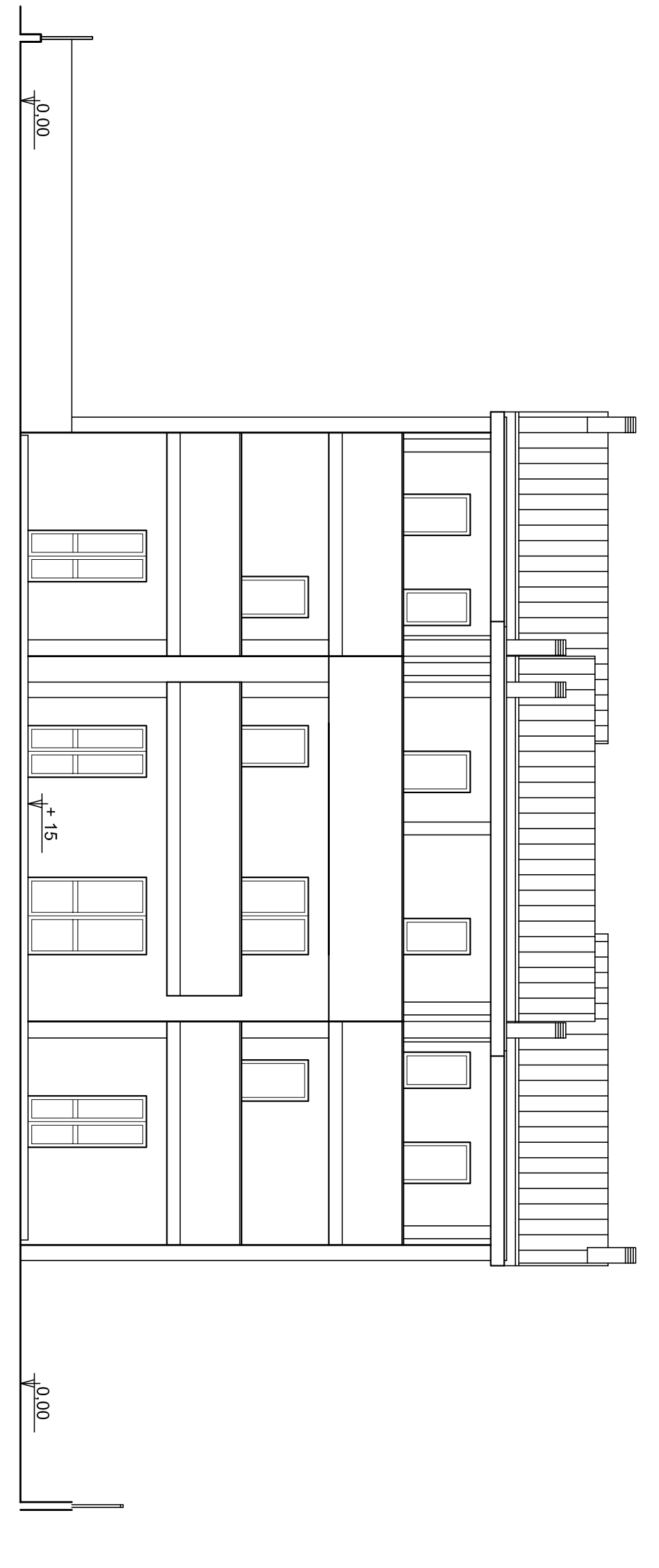
edificio B



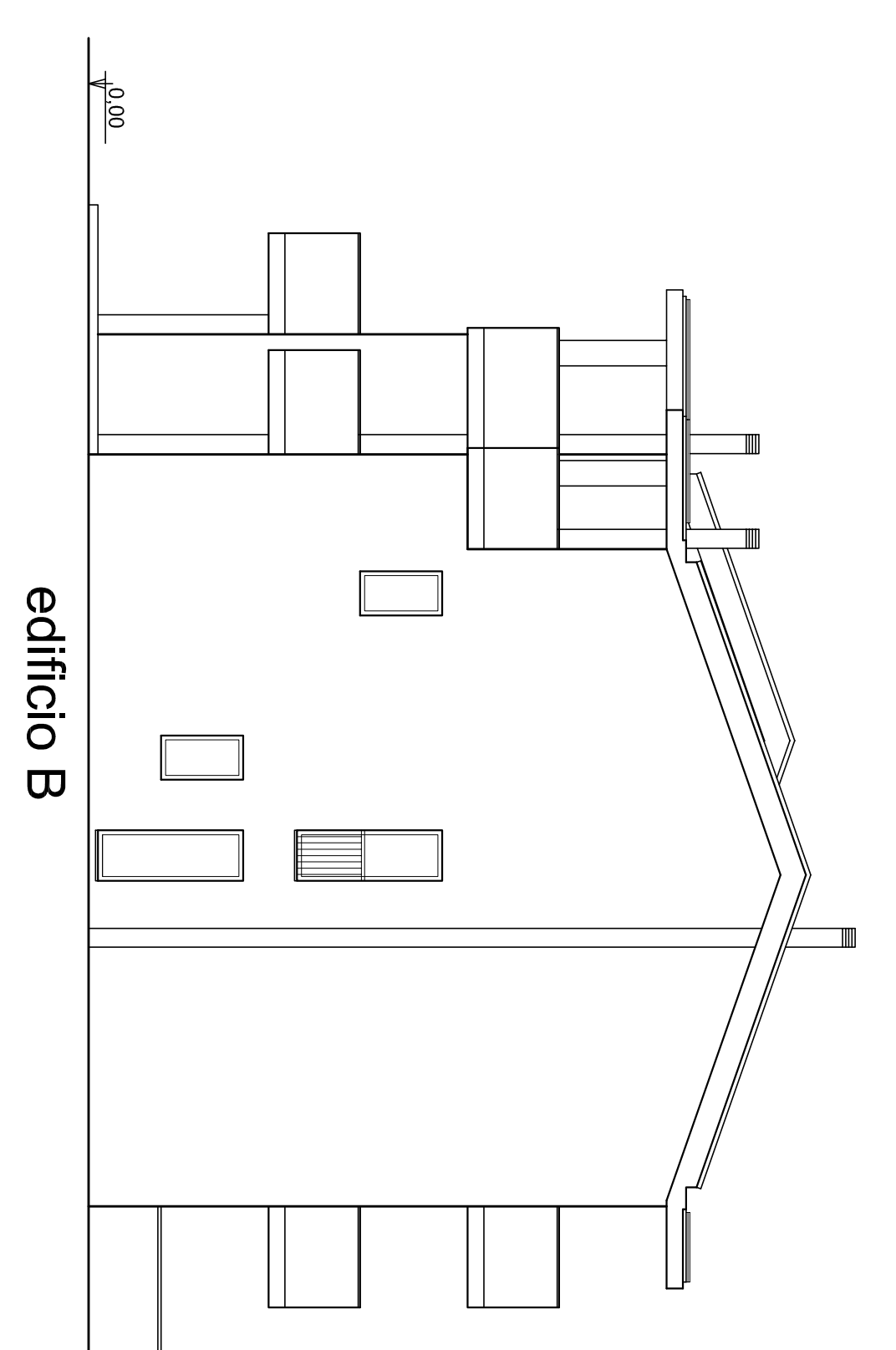
PROSPETTO SUD edificio A



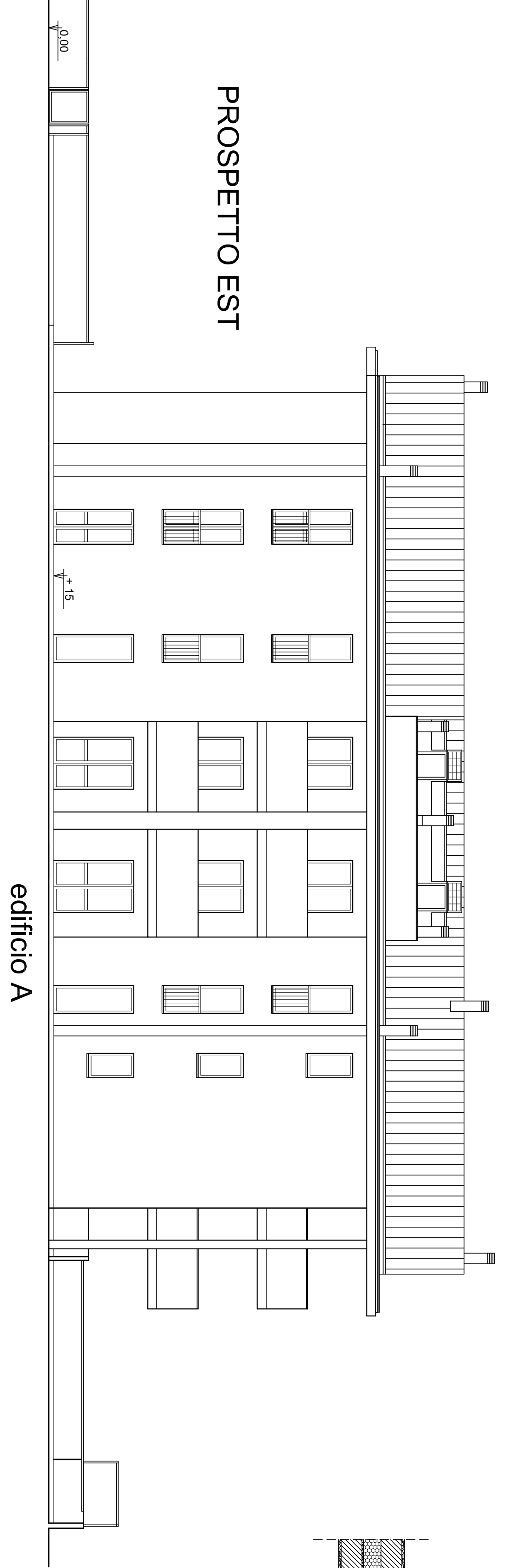
PROSPETTO NORD edificio B



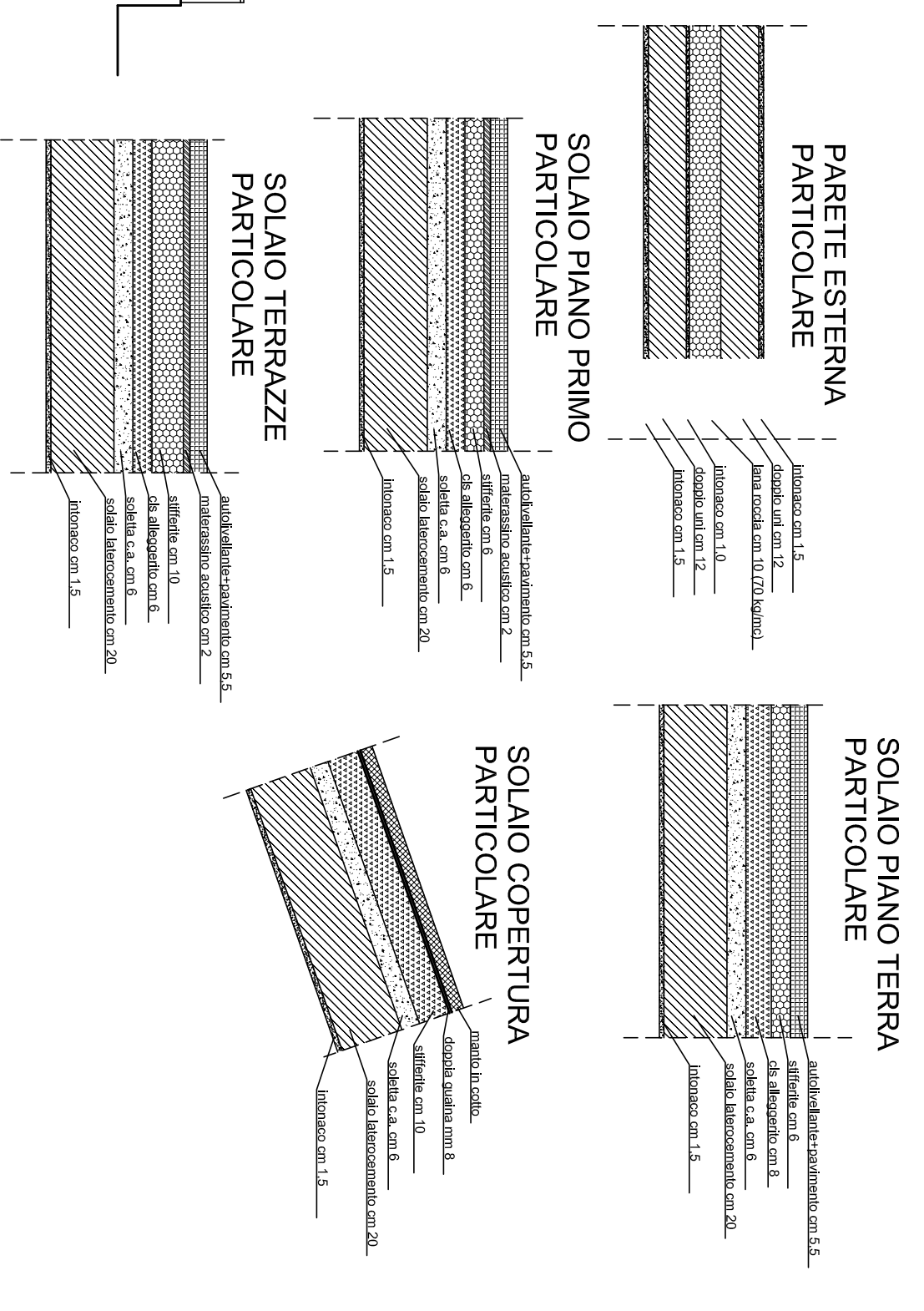
PROSPETTO SUD edificio B



PROSPETTO EST



edificio A



PARETE ESTERNA
PARTICOLARE

SOLAIO PIANO PRIMO
PARTICOLARE

SOLAIO TERRAZZE
PARTICOLARE

SOLAIO PIANO TERZA
PARTICOLARE

SOLAIO COPERTURA
PARTICOLARE