

Comune di Prato PIANO DI RECUPERO "Galleria Roncioni"

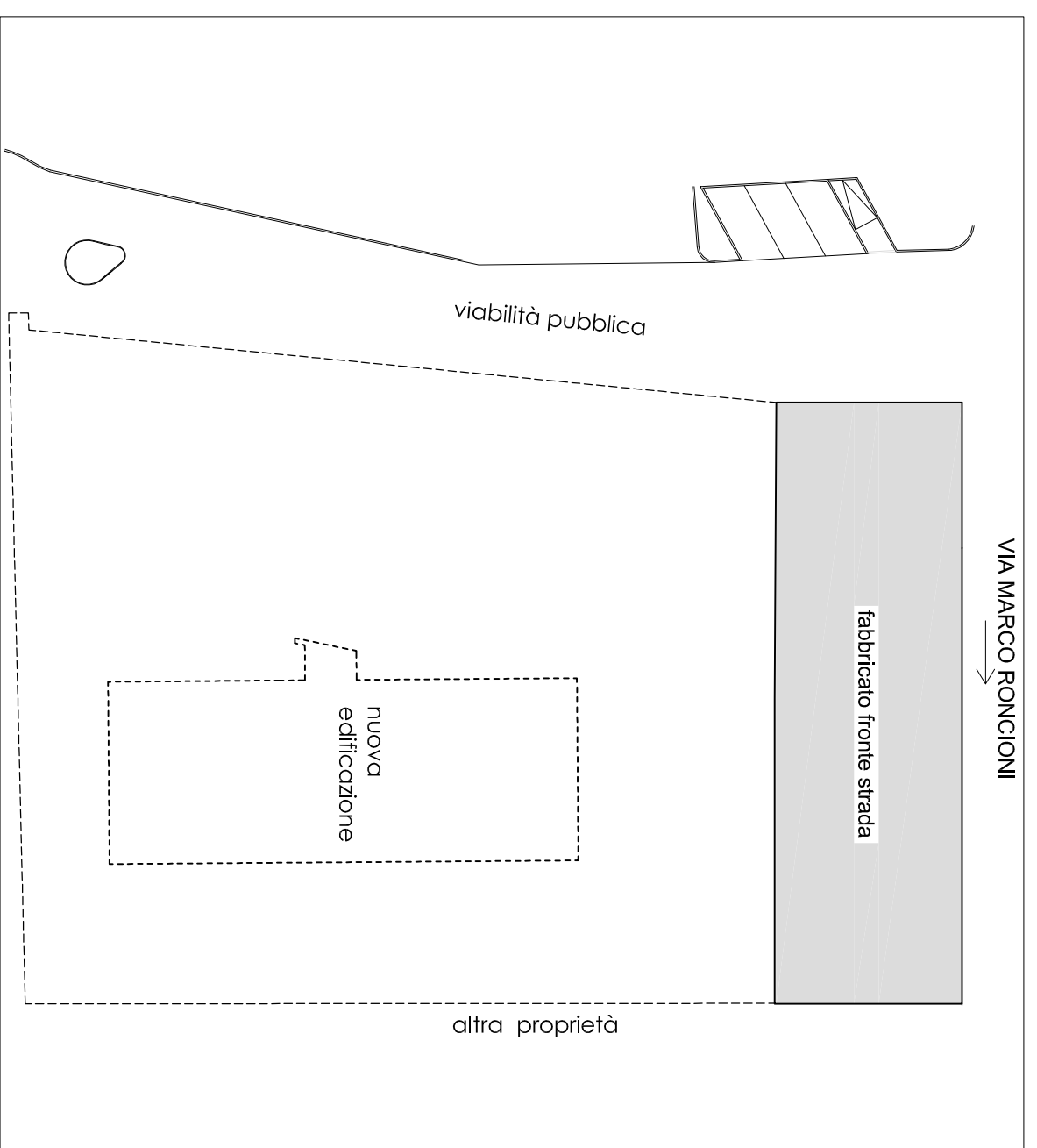
via Marco Roncioni nc 95 - 105

Committenti
Margherita BESSI
Mauro SANESI
Paolo SANESI
Paolo SANESI

Elaborati Stato di Progetto
FABBRICATO FRONTE STRADA
Pionte
Prospetti
Sezioni
scale 1:200

Progettisti
Isabella Caprioglio architetto
Carlo Puggelli ingegnere

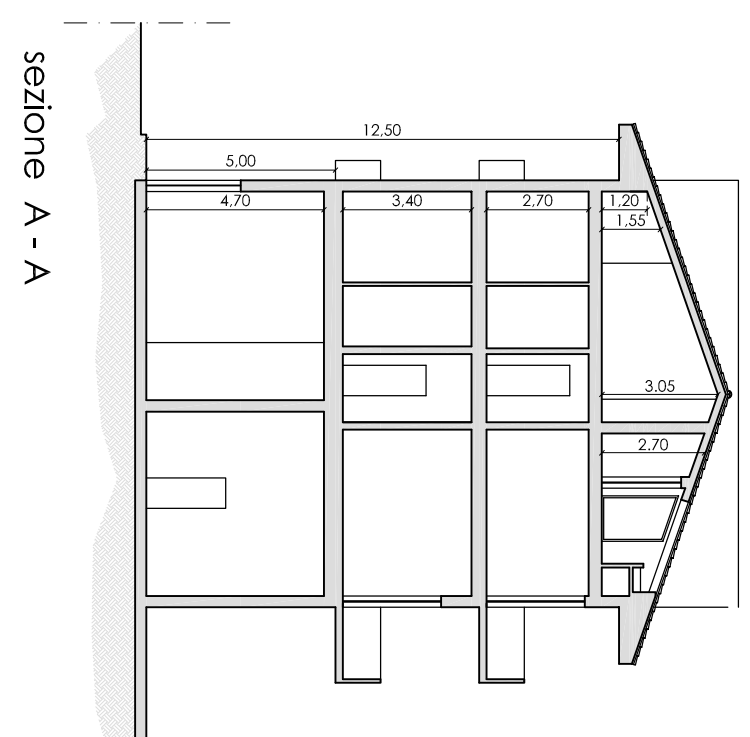
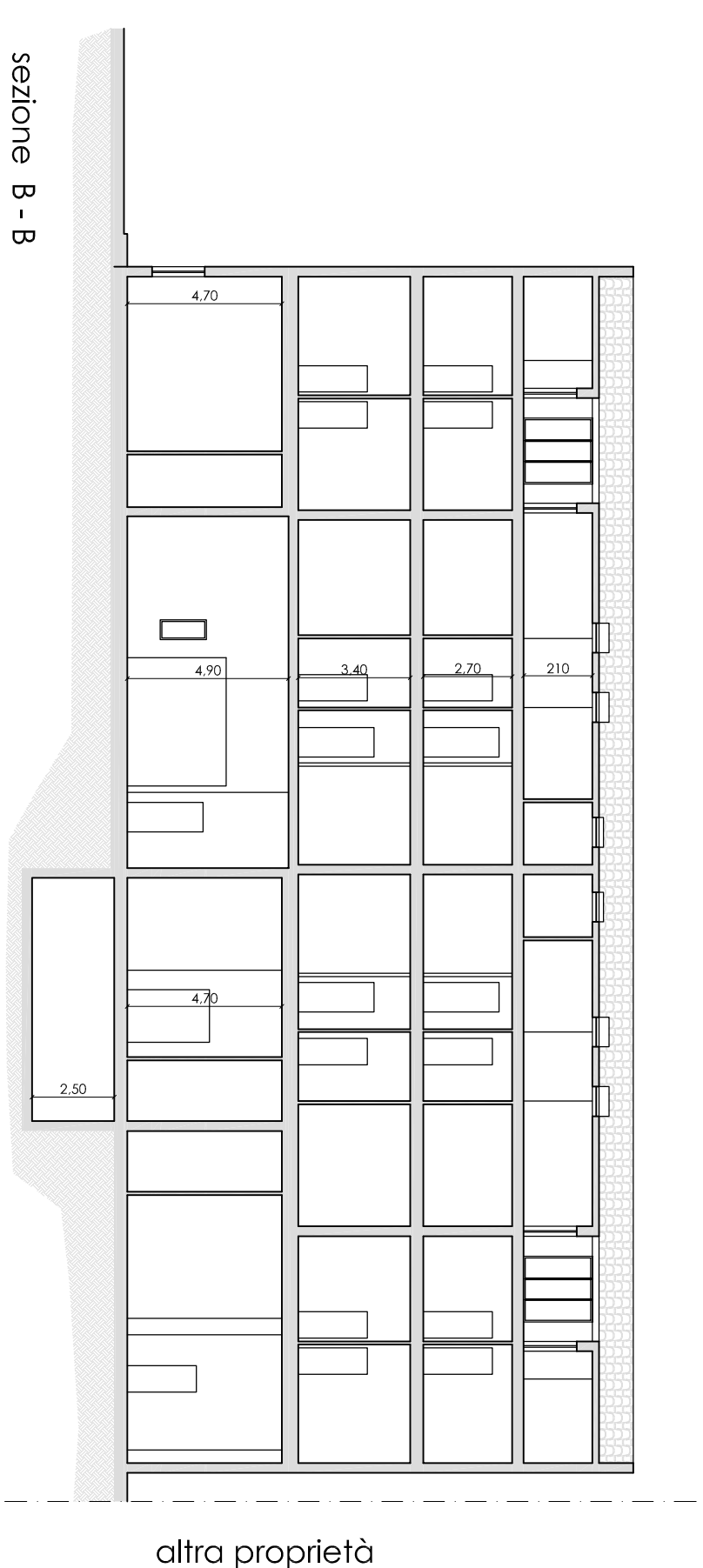
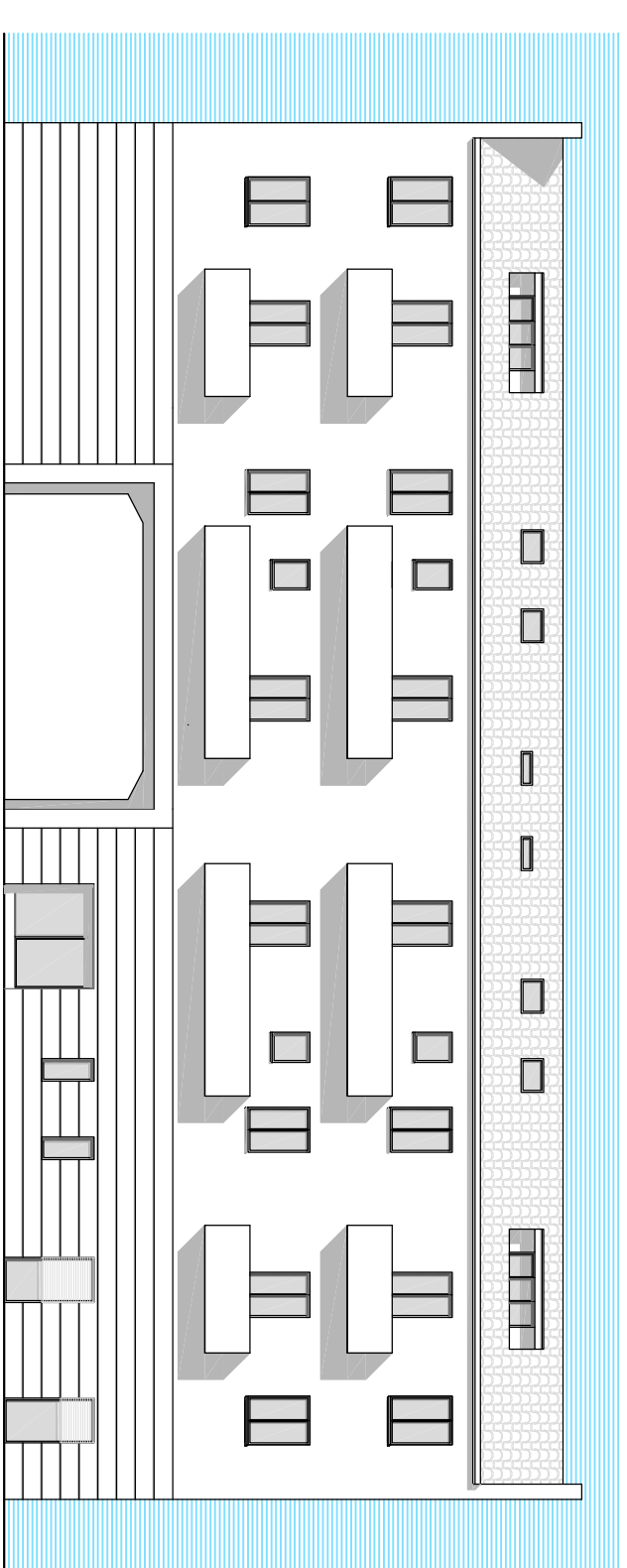
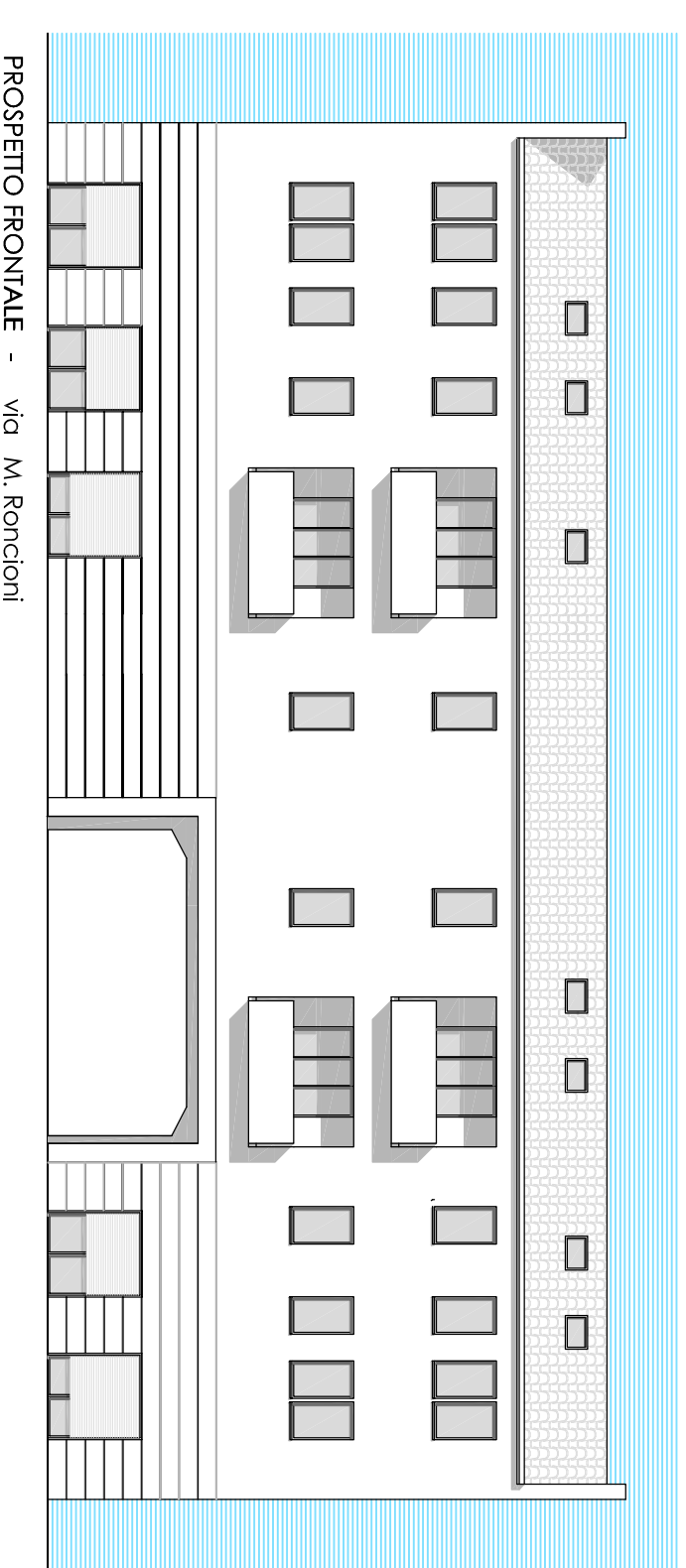
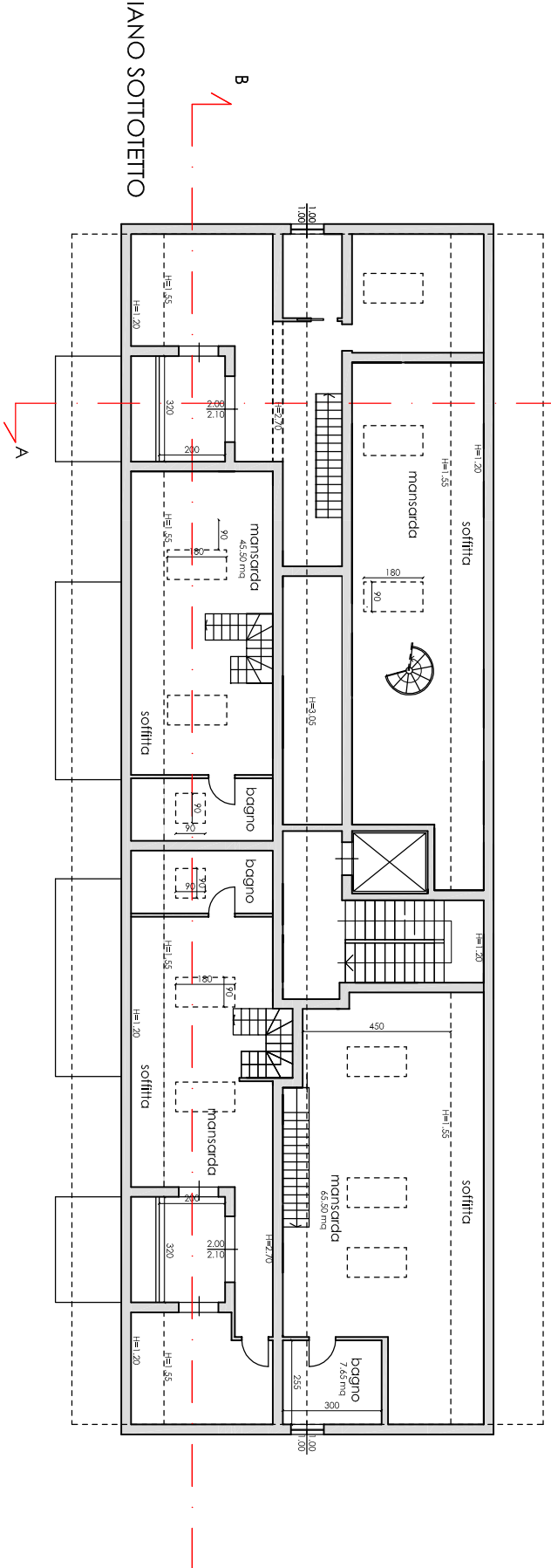
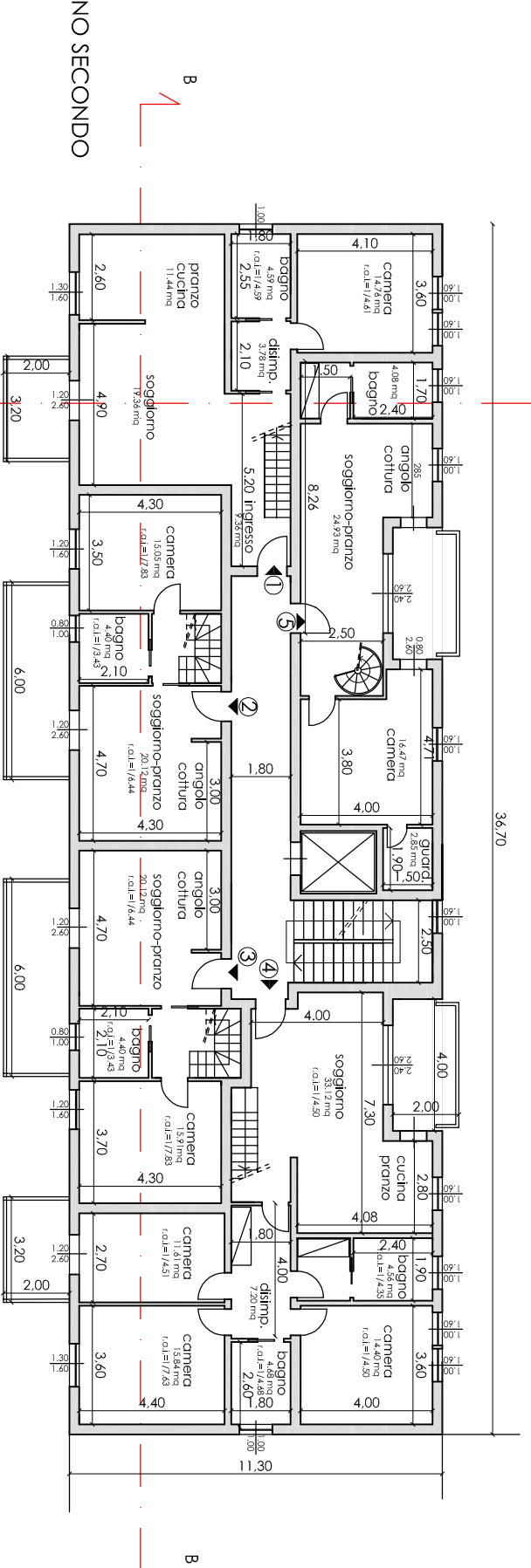
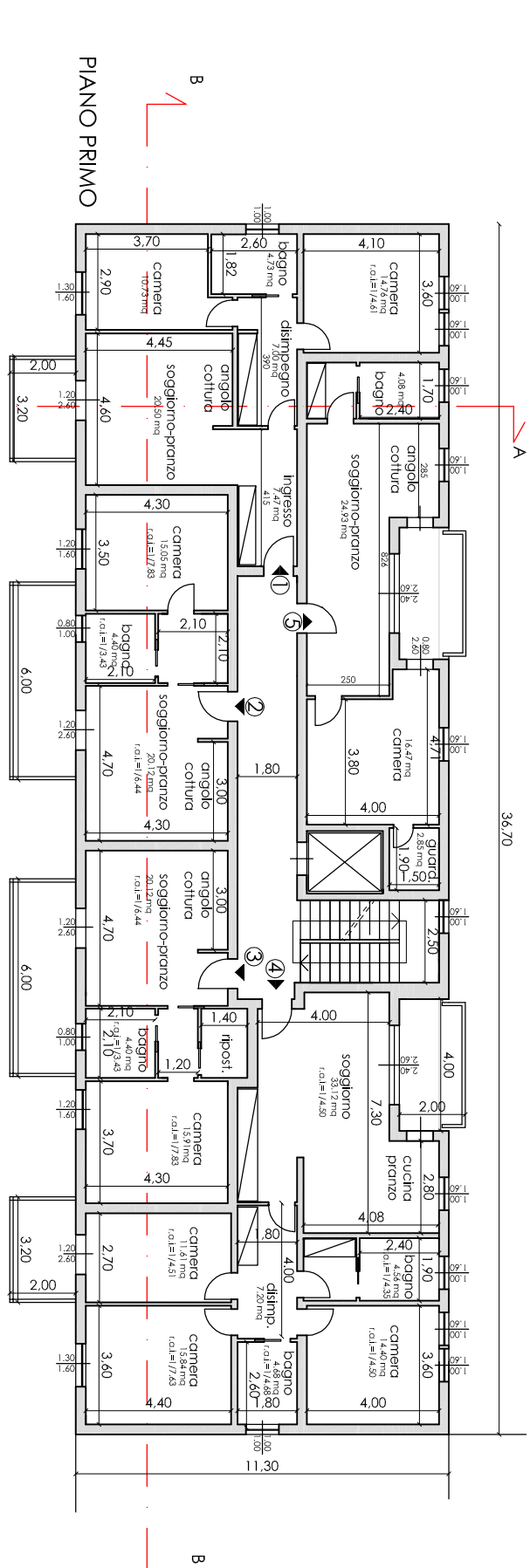
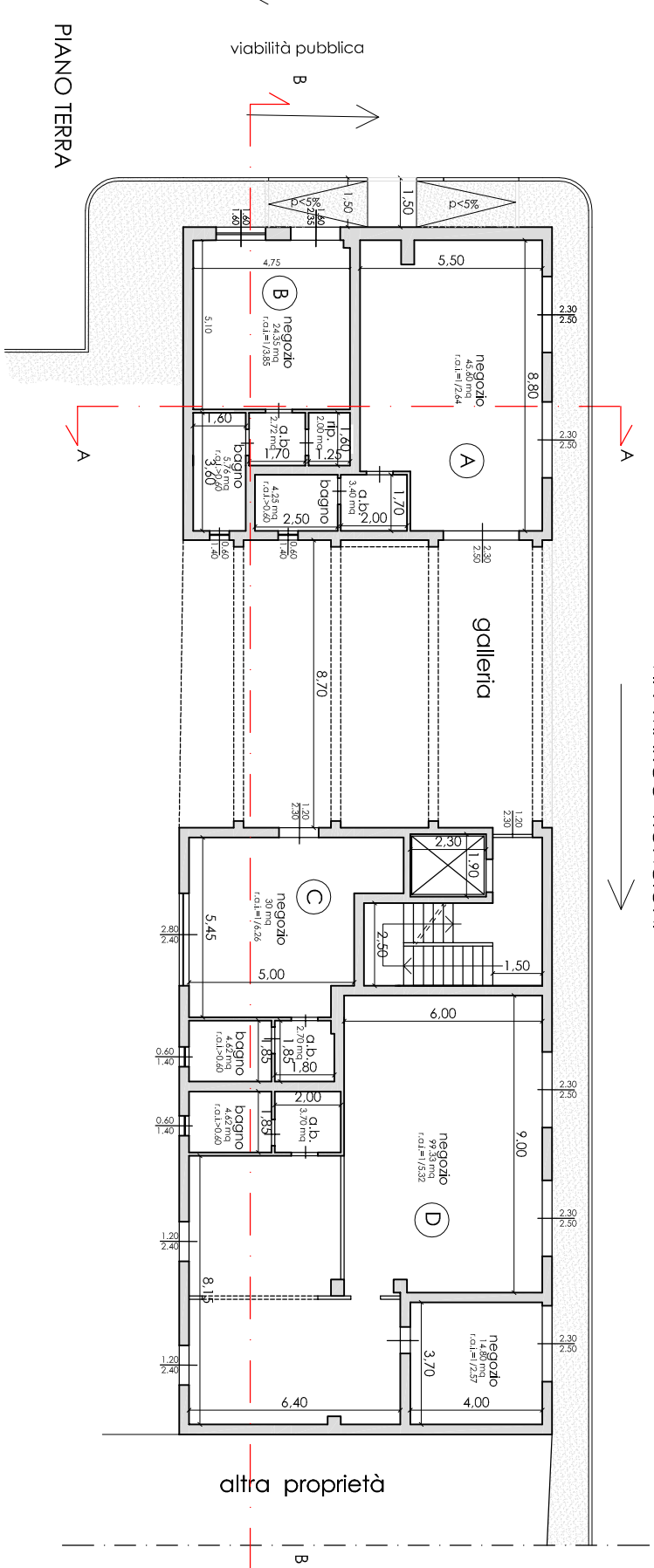
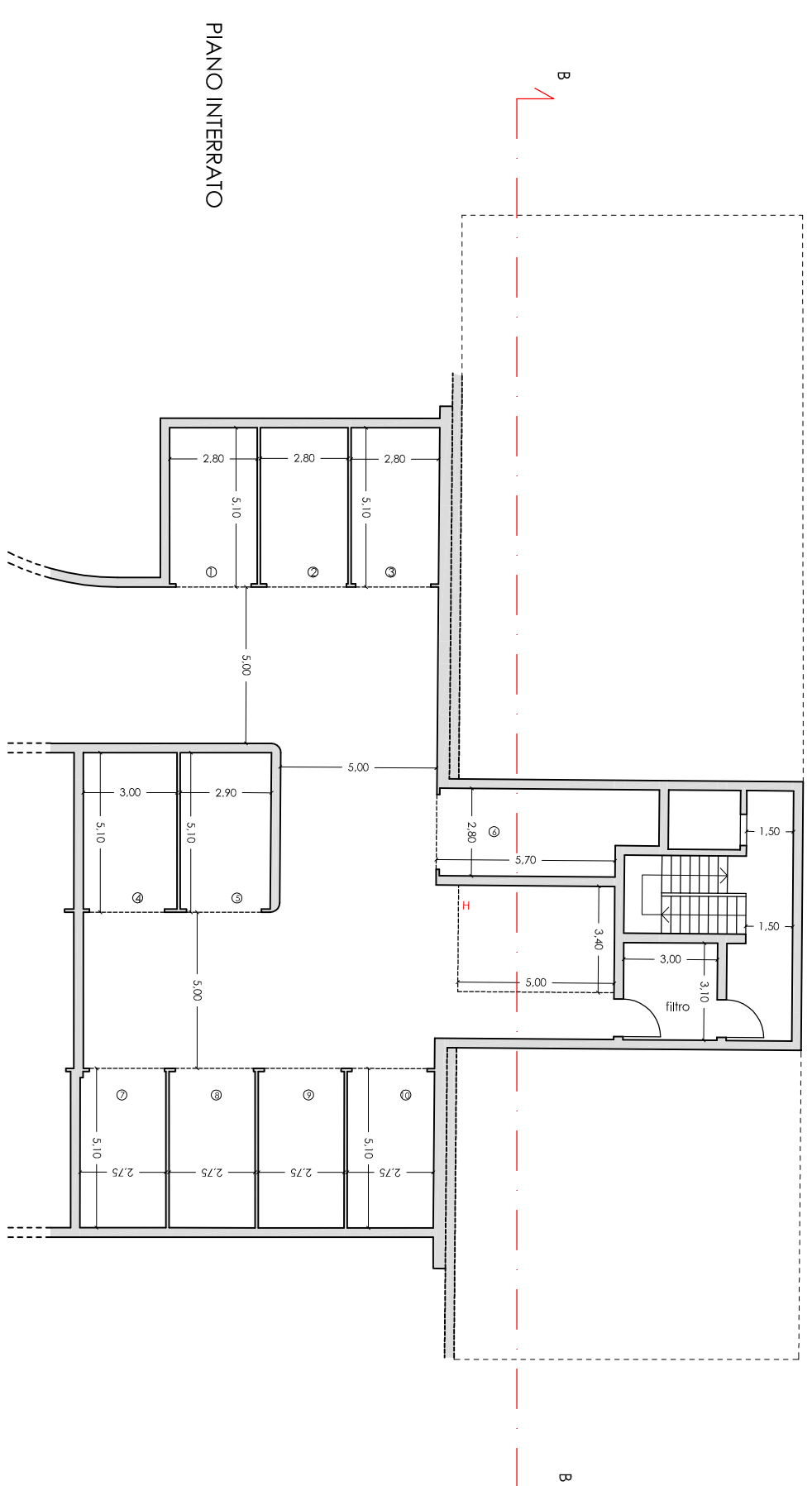
Tavola
9
maggio 2013



RESIDENZA - RAPPORTO SUPERFICI NETTE di cui al comma 4bis Art. 30 R.U.

opp. 1 P.1°	(7,47+7,00+4,73+14,76+10,73+20,50) =	65,19 mq
opp. 2 P.1°	(13,05+4,40+20,12+4,41) =	43,98 mq
opp. 3 P.1°	(20,12+4,40+15,91+2,52+2,94) =	45,98 mq
opp. 4 P.1°	(33,12+7,20+4,68+14,40+4,56+3,04) =	67,00 mq
opp. 5 P.1°	(4,08+2,55+24,93+16,47+2,85) =	50,88 mq
opp. 1 P.2°	(9,36+3,78+14,76+4,59+11,44+19,36) =	63,29 mq
opp. 2 P.2°	(15,05+4,40+20,12+4,41) =	43,98 mq
opp. 3 P.2°	(20,12+4,40+15,91+2,52+2,94) =	45,98 mq
opp. 4 P.2°	(33,12+7,20+4,68+14,40+4,56+3,04) =	67,00 mq
opp. 5 P.2°	(4,08+2,55+24,93+16,47+2,85) =	50,88 mq
totale		544,16 mq

n° 10 appartamenti => sup. netta media 54,42 mq/opp > 50,00



CALCOLO VOLUME DI PROGETTO (richiamo fig. 10 e 11 RE.C.)

Volume Attuale
(vedi tavola 8) = 5515,64 mc
Volume di Progetto =
Volume +
11,30m x 2,00m / 2 x 36,70m =
414,71 mc

Volume di Progetto =
5515,64 + 414,71 = 5930,35 mc

