

COMUNE DI PRATO

Piano di recupero per cambio di destinazione e modifiche interne in edificio attualmente ad uso cinema posto in Prato, Corso Mazzoni angolo Via de' Manassei

PROPRIETA': Paolo Becherucci, Silvia Becherucci

PROGETTISTA: Arch. Maurizio Barili
Ing. Federico Mazzoni

DIREZIONE LAVORI: Arch. Maurizio Barili
Ing. Federico Mazzoni

OGGETTO:
SCHEMA CALCOLI DELLE SUPERFICI
SCALA 1:100

TAV. 5

NOVEMBRE 2012

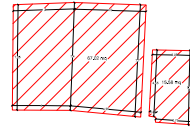
STATO ATTUALE

BARILI & MAZZONI
ASSOCIATI

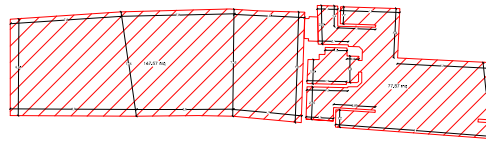
BARILI & MAZZONI ASSOCIATI - TEL. +39 0574 521011 - FAX +39 0574 521012 - WWW.BARILI-MAZZONI.IT

Sup. Netta (Sn)	307.55 Mq
Sup. Lorda (Slp)	539.99 Mq
Sup. Accessoria (Sa)	126.68 Mq
Sup. Utile (Su) = (Sn+0.60xSa)	= 383.56 Mq

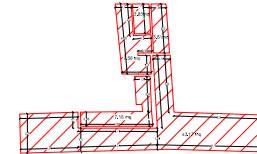
Calcolo Sup. Netta (Sn)
PIANO TERRA
(143,98+172,57) = 221,85 m²
PIANO PRIMO
(85,70+125,80) = 211,50 m²
Totale 307,55 m²



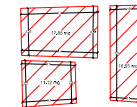
PIANO PRIMO SCALA 1:100



PIANO TERRA SCALA 1:100

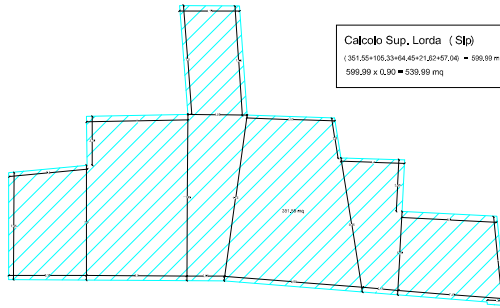


PIANO TERRA SCALA 1:100



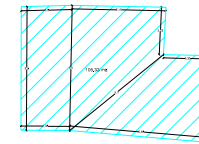
PIANO INTERRATO SCALA 1:100

Calcolo Sup. accessoria (Sa)
PIANO TERRA
(2,15+3,81+7,58+43,17+7,15) = 64,28 m²
PIANO ANNEZZATO
(1,12+2,4+0,99) = 4,51 m²
PIANO SEMINTERRATO
(1,72+11,12+18,65) = 45,62 m²
Totale 126,68 m²

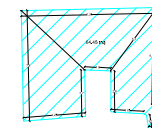


PIANO TERRA SCALA 1:100

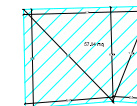
Calcolo Sup. Lorda (Slp)
(381,55+105,33+64,45+21,52+57,04) = 599,89 m²
599,89 x 0,90 = 539,99 m²



PIANO PRIMO SCALA 1:100



PIANO INTERRATO SCALA 1:100



PIANO MEZZANINO SCALA 1:100