

COMUNE DI PRATO

PIANO DI RECUPERO RELATIVO AD

UN COMPLESSO IMMOBILIARE UBICATO

IN VIA S. GONDA

Proprietà : COOP. S. GONDA

Progetto : arch. Alessio Cantini
arch. Marco Bernasai
ing. Sino Chilliari

elaborato

scala

tavola

EDIFICIO 2 (N°12 Appartamenti)

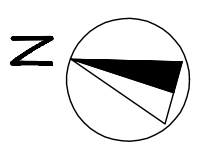
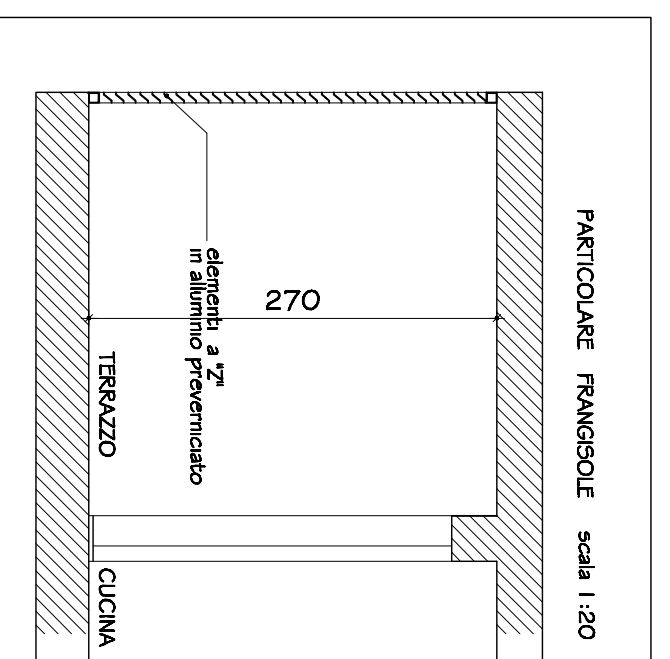
1 : 100

6

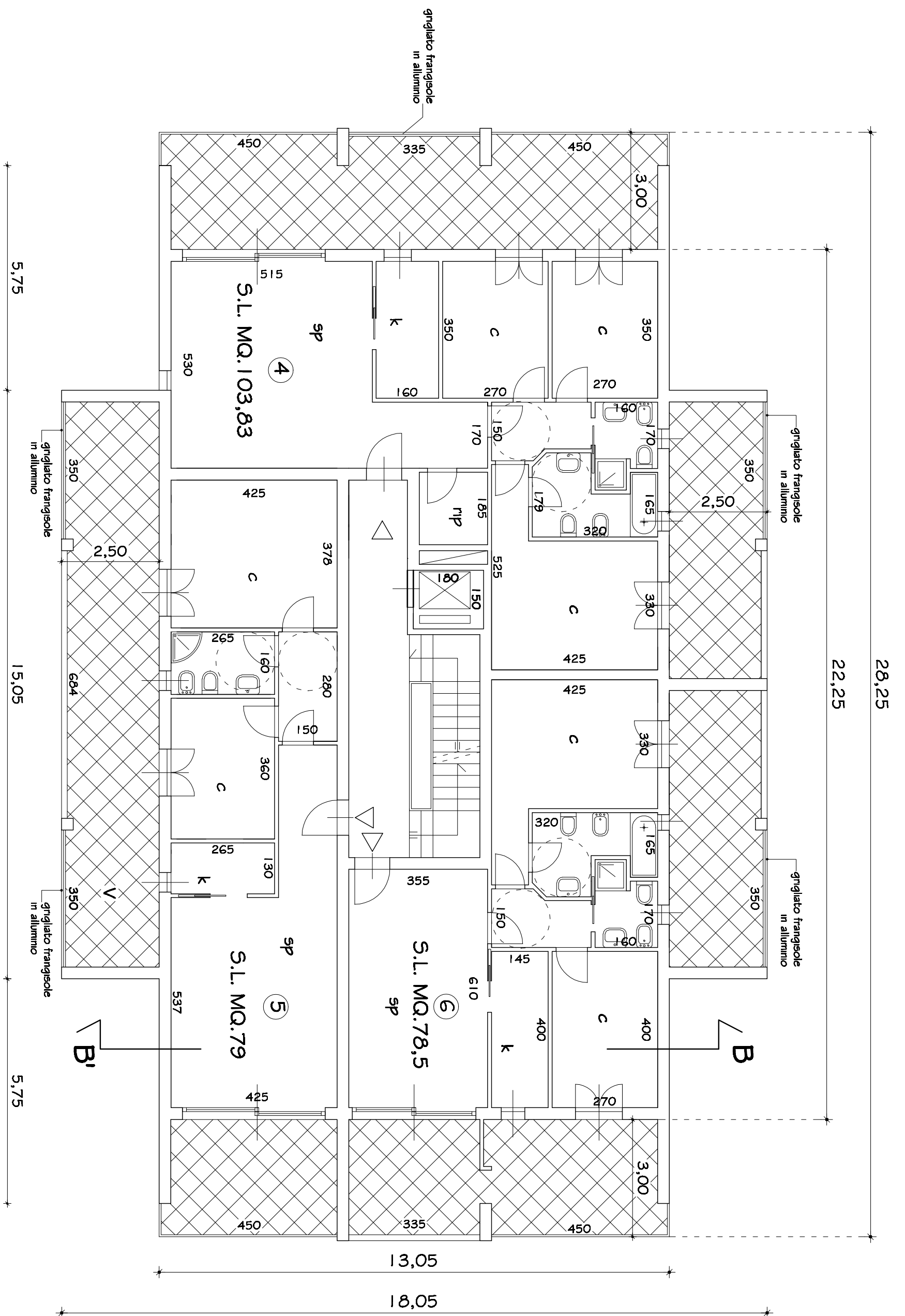
Parte piani 1°, 2°, 3°,
sottotetto e copertura

2206/10

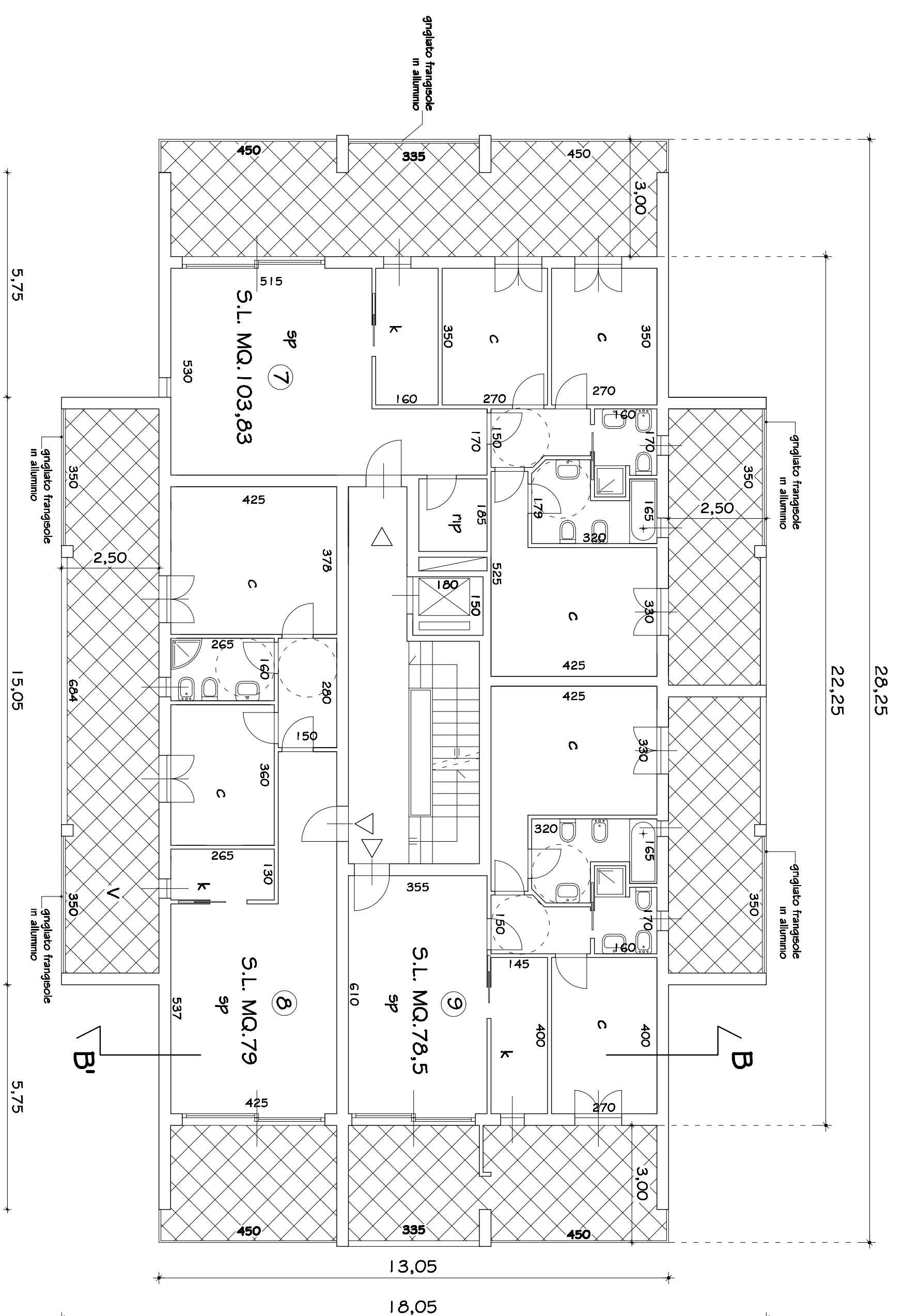
part. FRANGISOLE



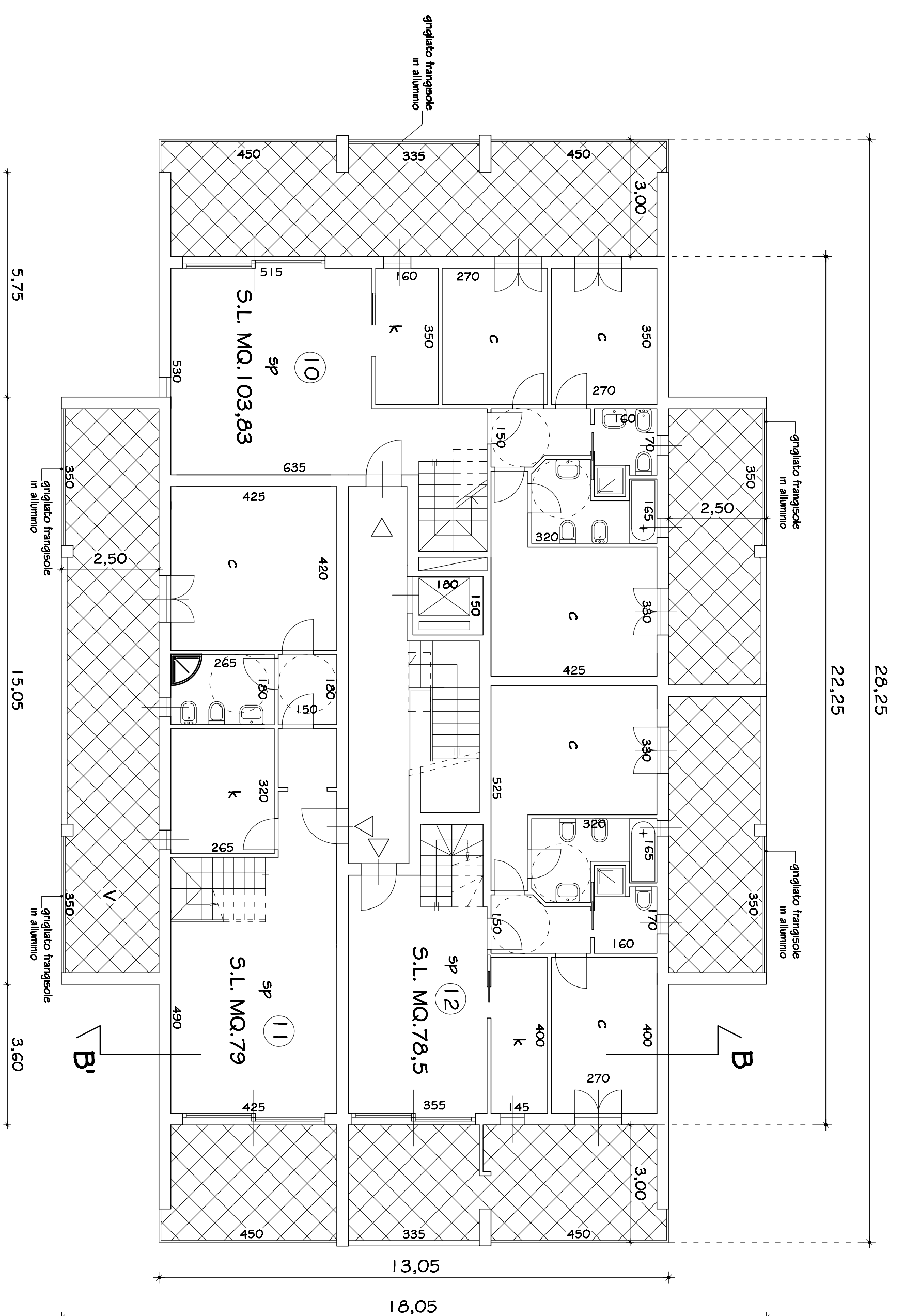
PIANTA PIANO PRIMO



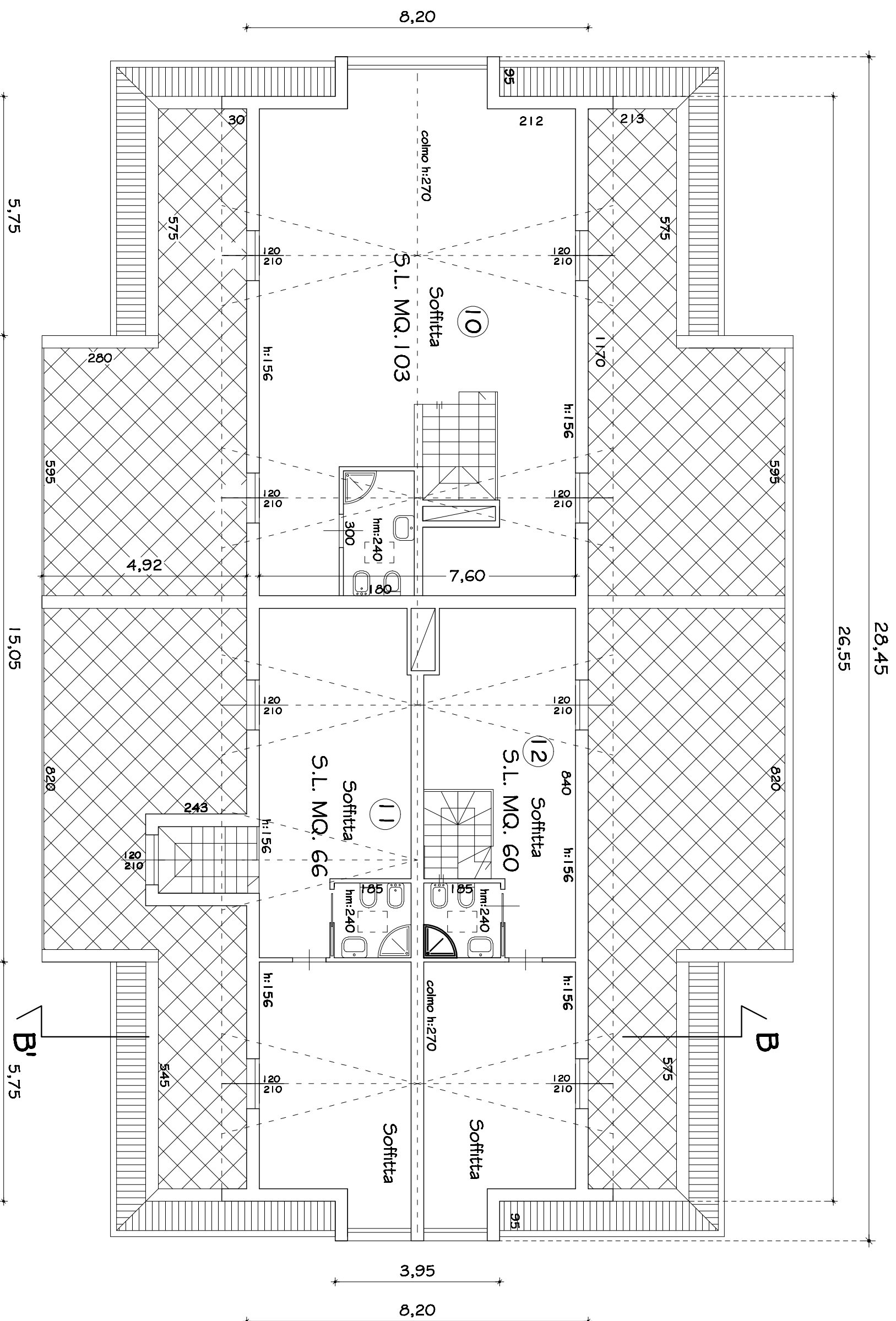
PIANTA PIANO SECONDO



PIANTA PIANO TERZO



PIANTA PIANO SOTTOTETTO



PIANTA PIANO COPERTURA

