

COMUNE DI PRATO

PIANO DI RECUPERO RELATIVO AD

UN COMPLESSO IMMOBILIARE UBICATO

IN VIA S. GONDA

Proprietà : COOP. S. GONDA

Progetto : arch. Alessio Carlini

ing. Marco Benassai

ing. Sino Chilleri

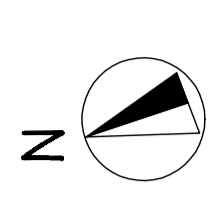
elaborato

scala tavola

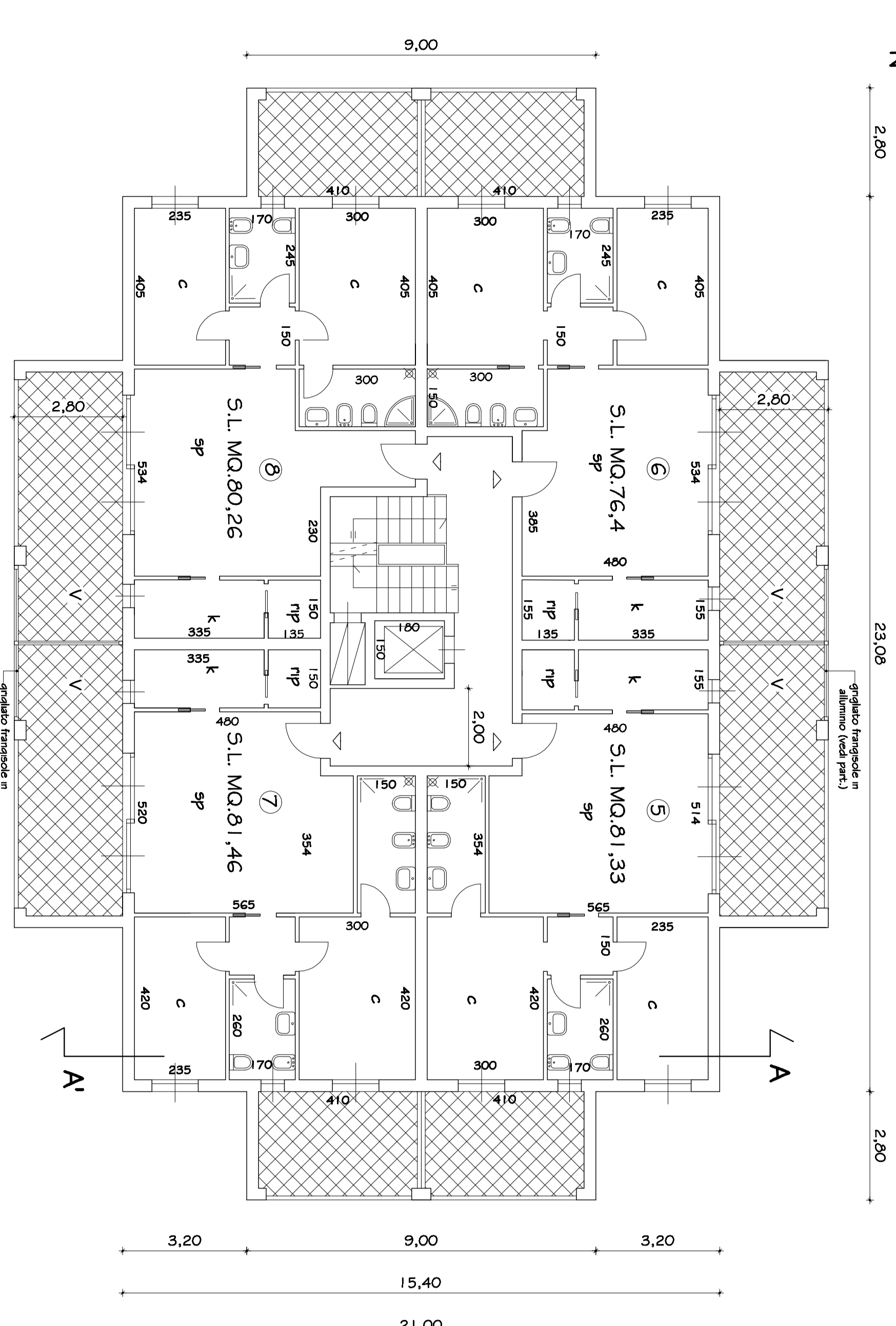
EDIFICIO I (N. 28 appartamenti)
Pianta Plan 1°, 2°, 3°, 4°, 5°, 6°
p. sottotetto e copertura

1 : 100

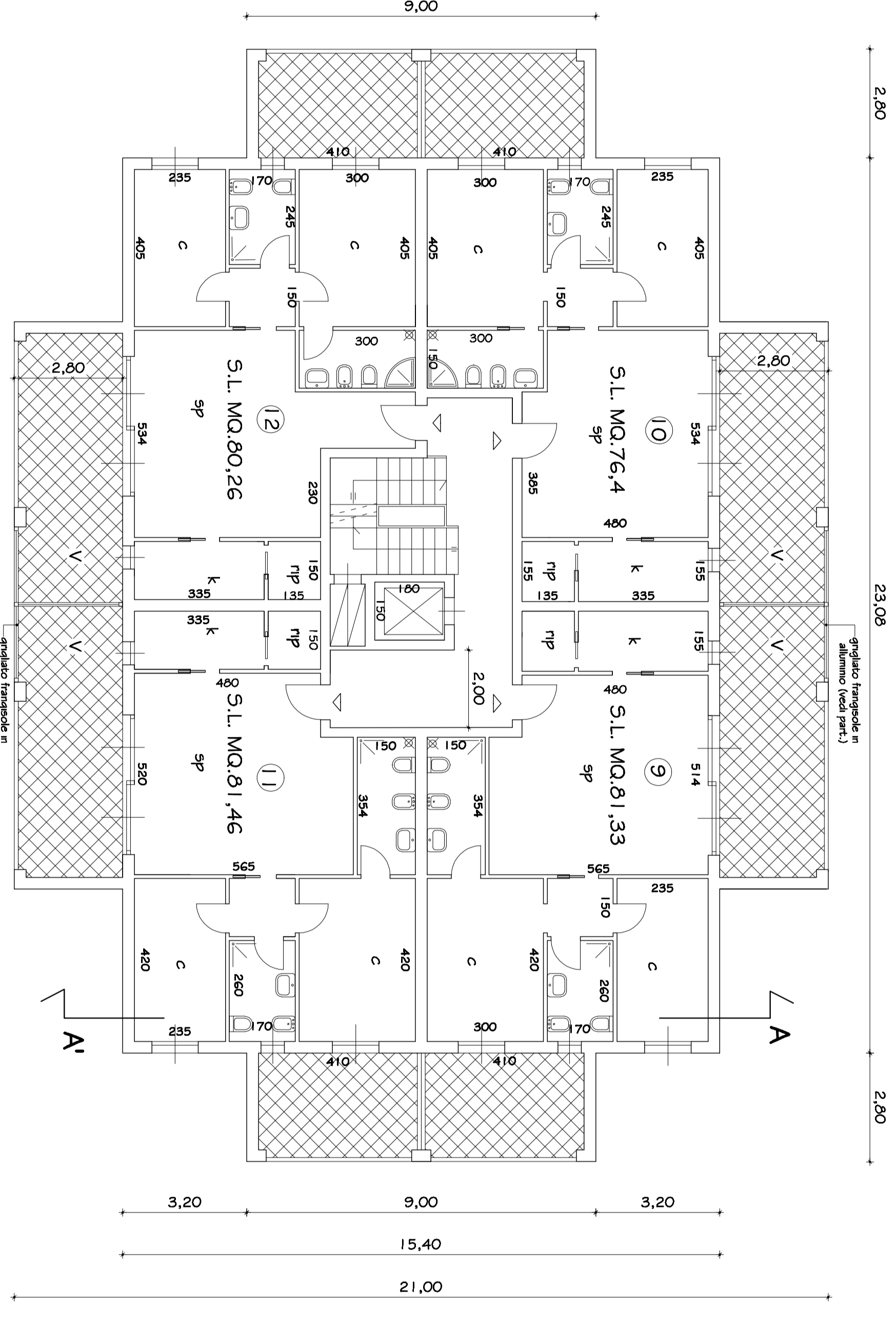
22/05/10



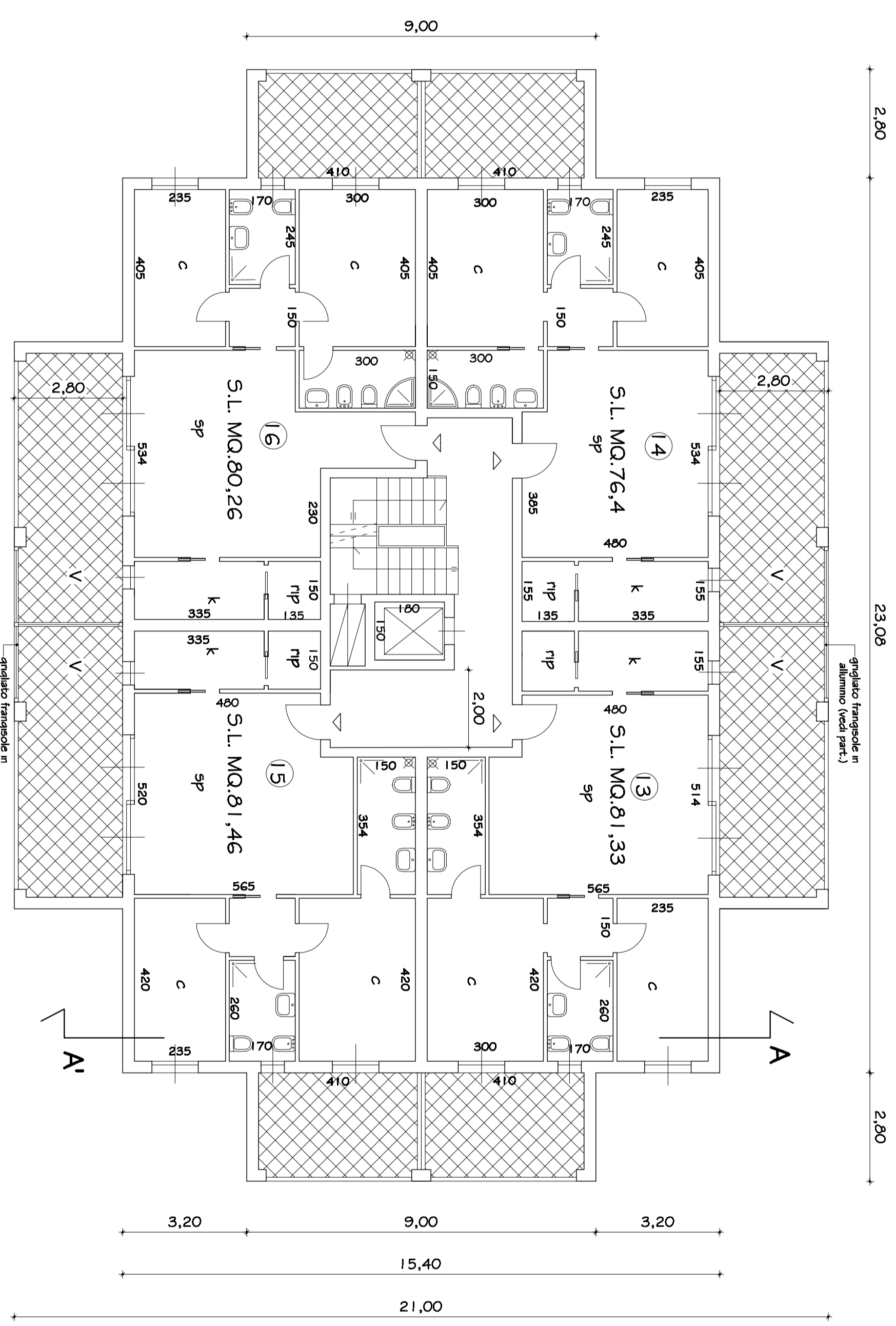
Pianta piano Primo



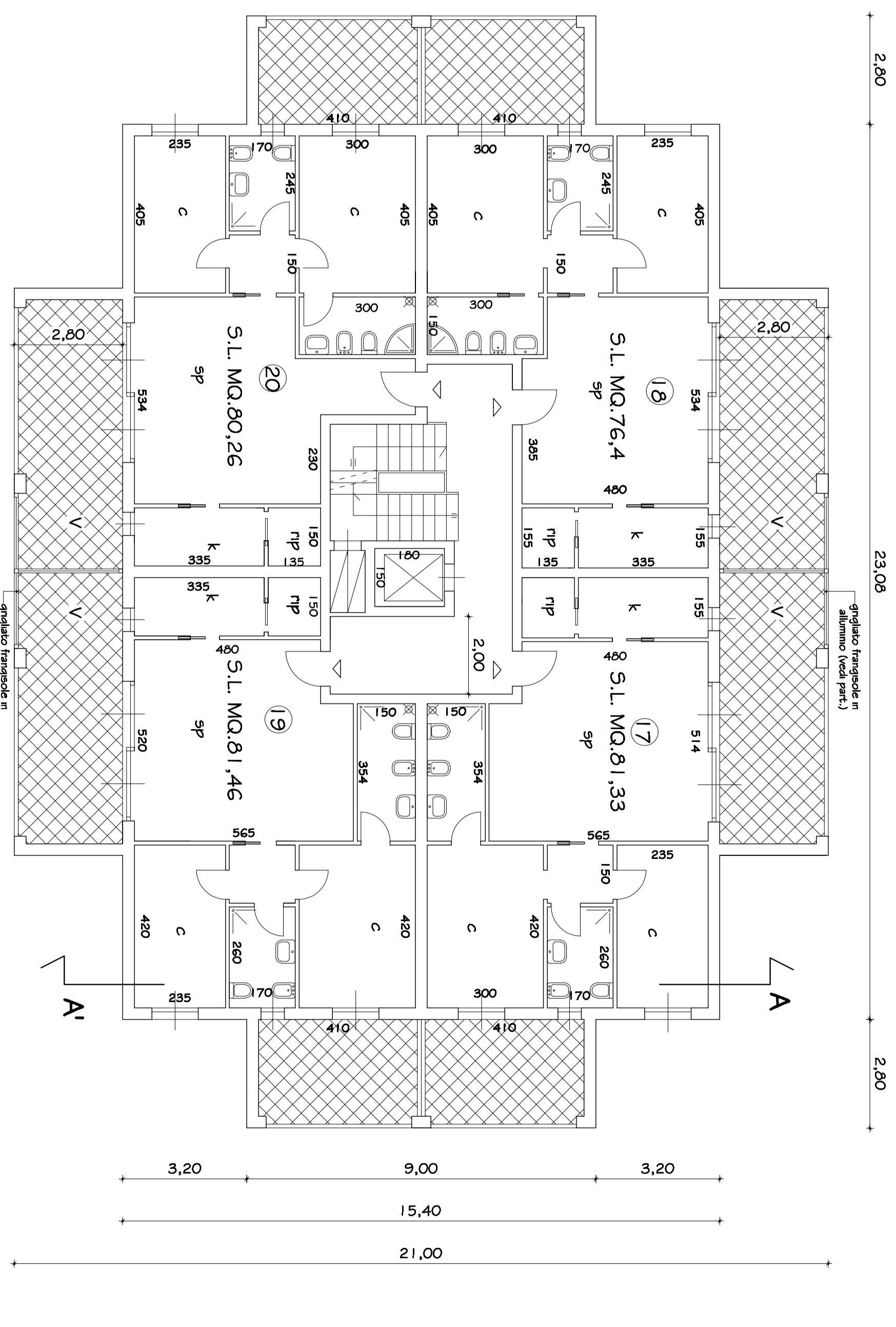
Pianta piano Secondo



Pianta piano Terzo



Pianta piano Quarto



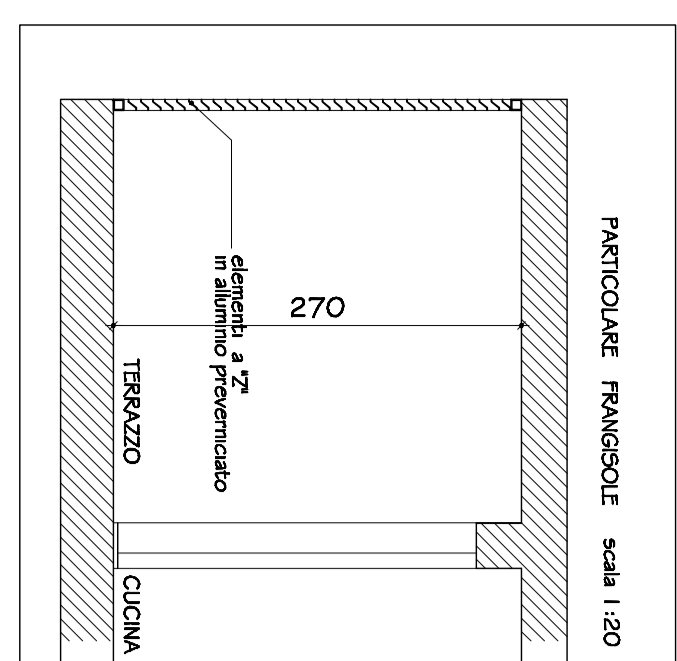
Pianta piano Quinto

Pianta piano Sesto

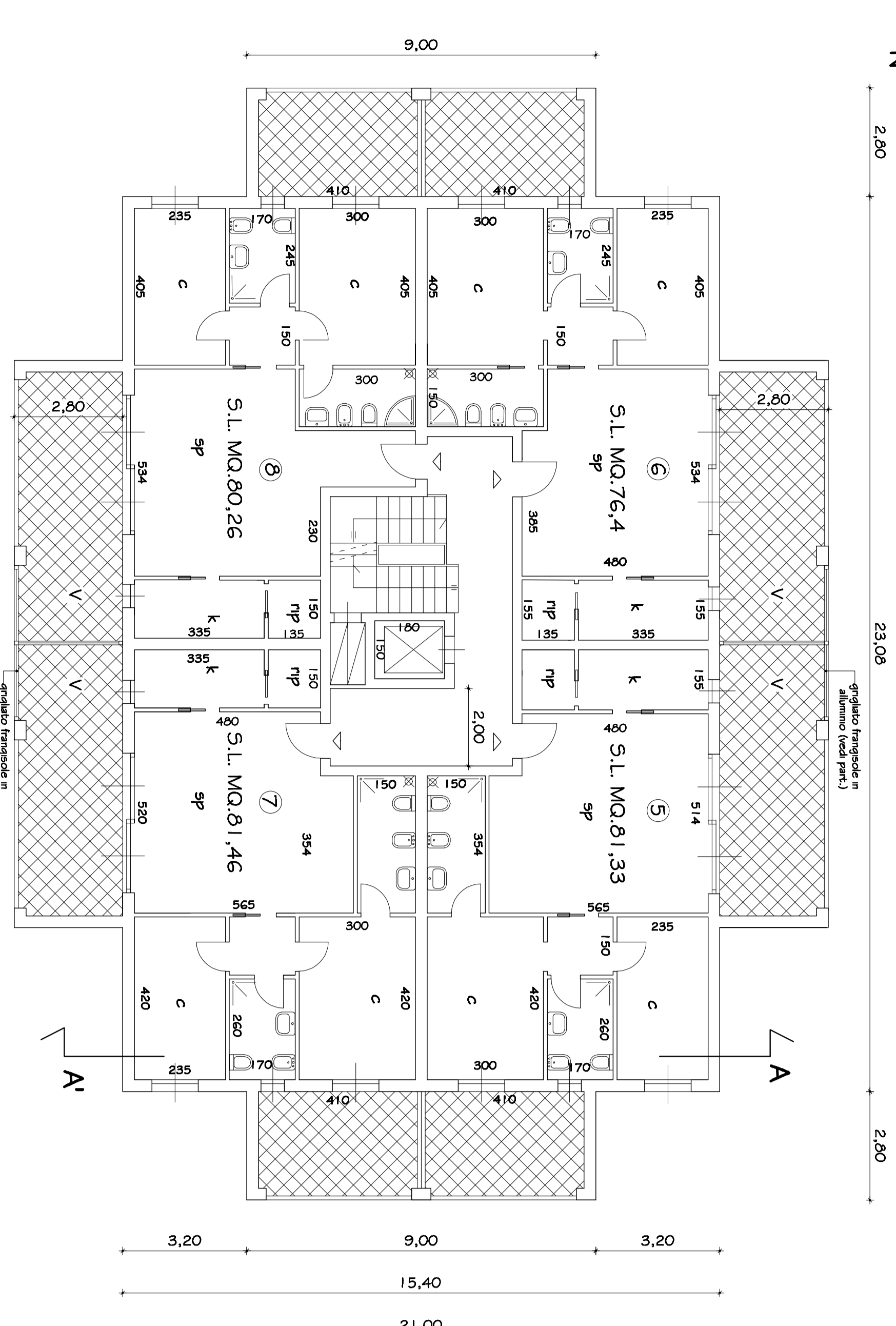
Pianta piano Sottotetto

Pianta piano copertura

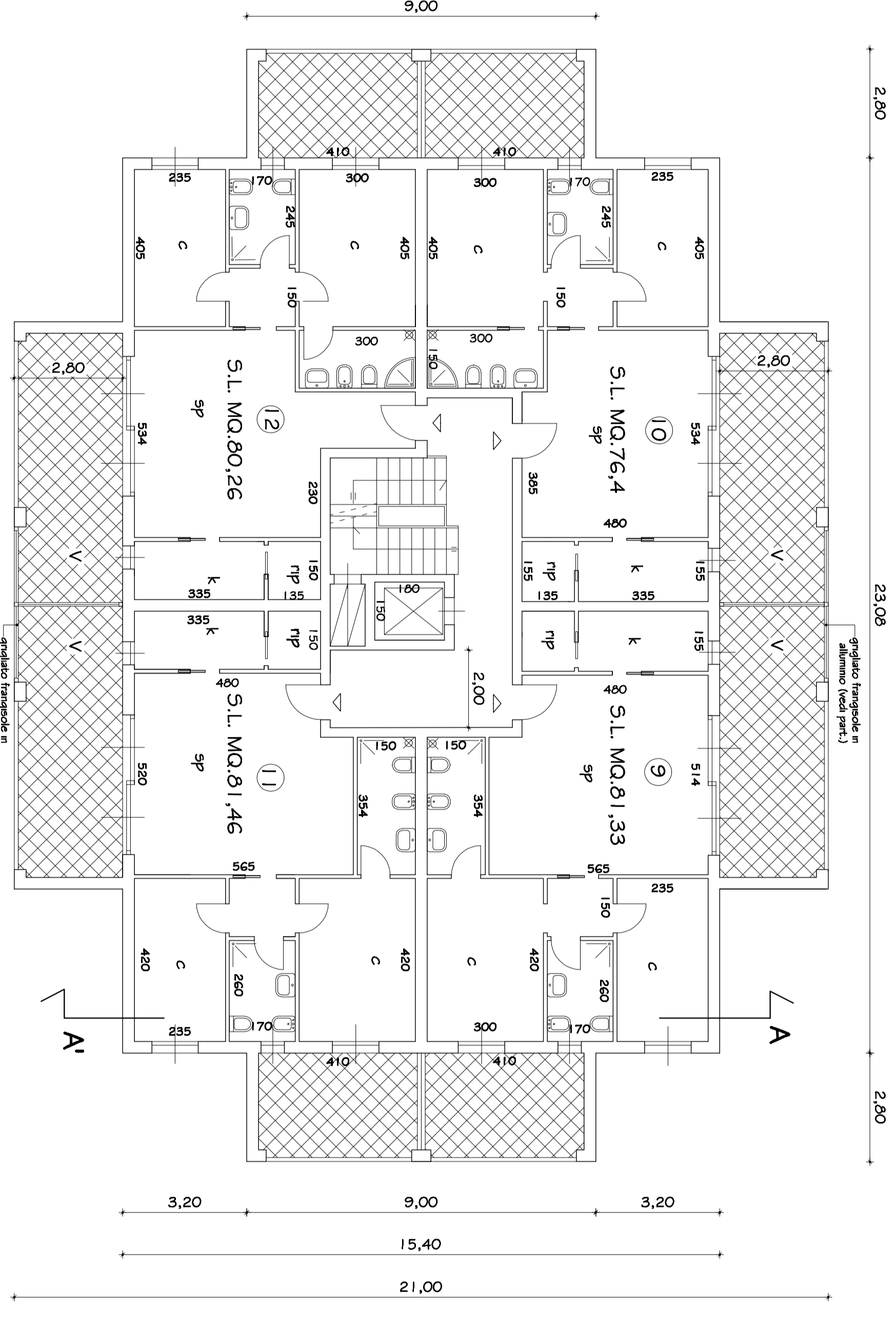
part. FRANGISOLE



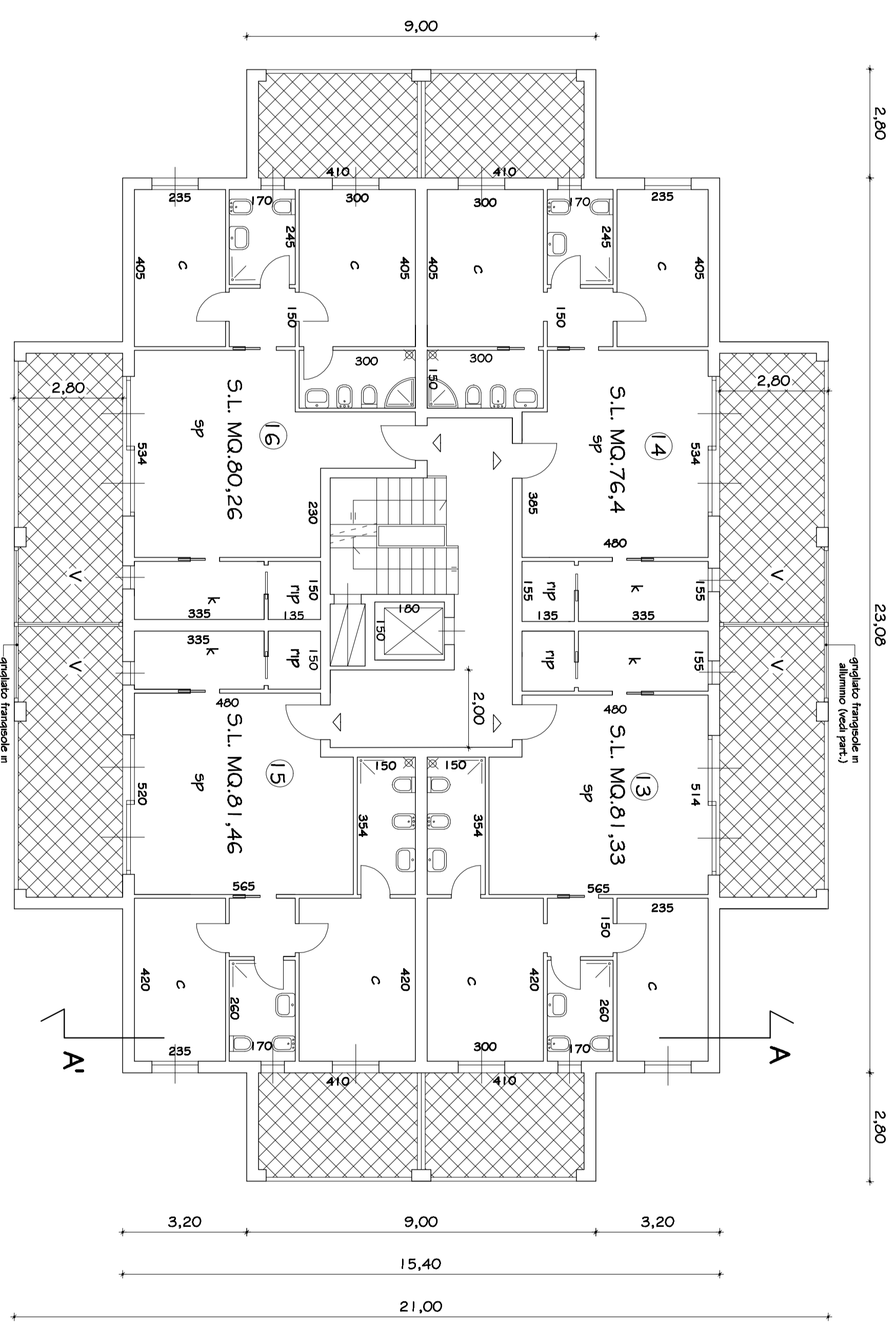
Pianta piano Primo



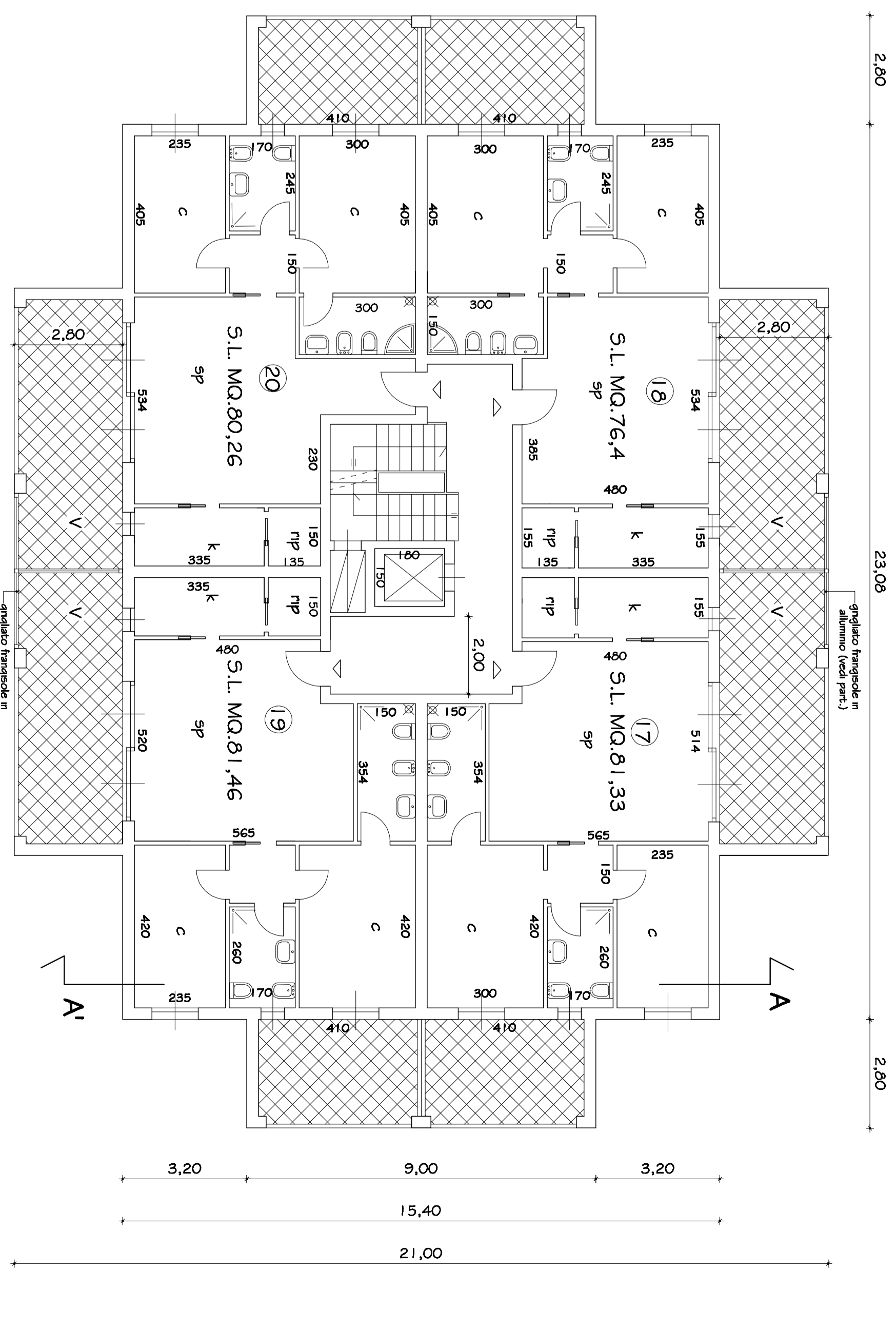
Pianta piano Secondo



Pianta piano Terzo



Pianta piano Quarto



Pianta piano Quinto

Pianta piano Sesto

Pianta piano Sottotetto

Pianta piano copertura

